



Catalog

Engels Baksteen

210x100x50 mm (WF) / 215x100x65 mm (DF)
/ eco-friendly and natural / 4 types of clay, 25 types of sand, water and fire / 115 primary colors



Engels Baksteen bricks

Engels Baksteen is a manufacturer of the highest quality hand-formed facing bricks from the Netherlands. The variety of Engels Baksteen bricks enables architects, designers and customers to realise any idea, conduct the most daring experiments and to create real masterpieces of brick architecture.

Engels Baksteen is a large company, which has a serious production capacity of up to 140 million units per year.

The history of the company dates back to 1913 as a family enterprise. Since its foundation the company has been owned by the Engels family. Today the company is run by the fifth generation of the family.



- Engels Baksteen was awarded the title of "Royal Company" in 2013. The King's title is awarded to only one company in the industry. This title is awarded to leaders in their field, that are of national importance and have been in existence for at least 100 years.

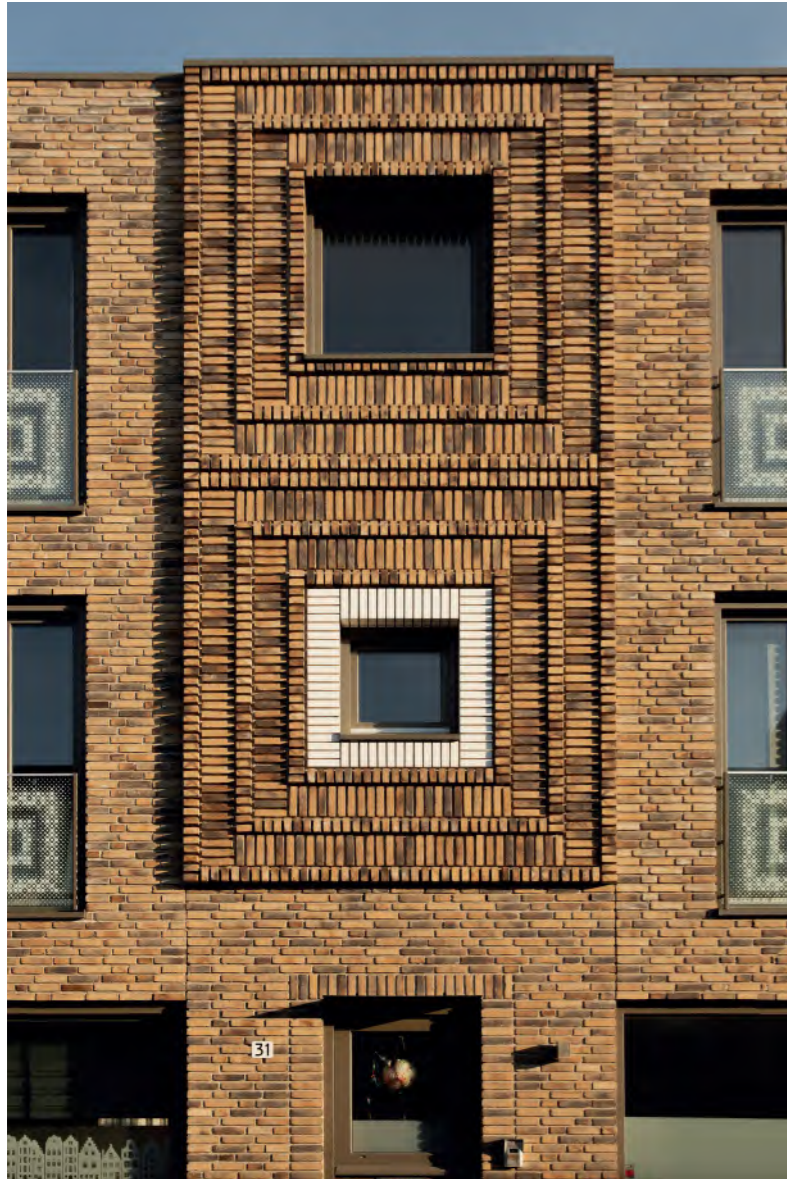


Engels Baksteen offers more than 230 different types of bricks with different colours and sizes

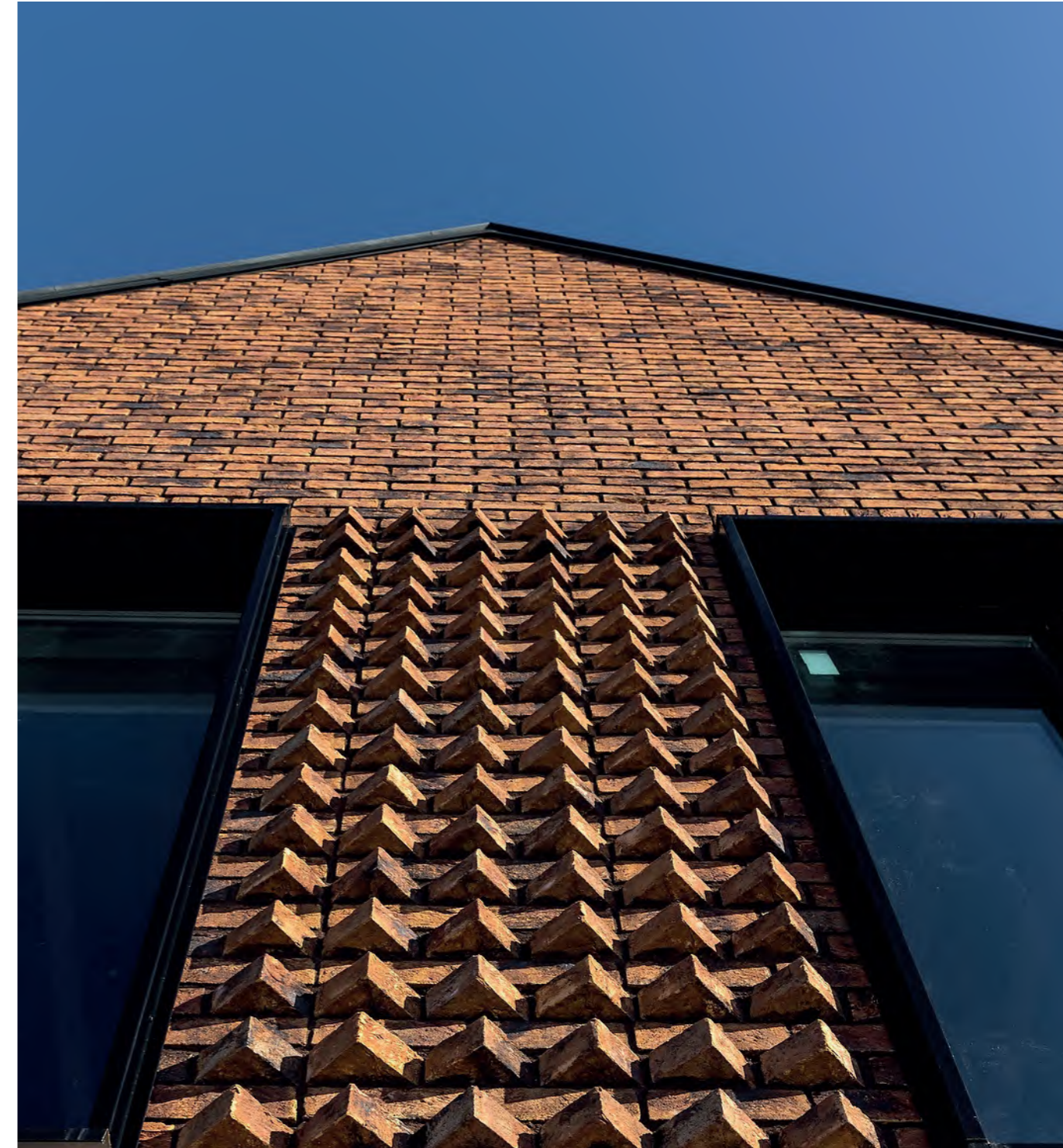
● 115 basic colours

● 2 sizes – 210x100x50 mm (WF) and 215x100x65 mm (DF)

● 4 textures



The diverse colour palette combined with the numerous textures allows the most daring architectural solutions with bricks to be realised.



Brick collections

p. 8



Handform

● HANDFORM — a classic handmade brick with characteristic texture (during production the clay ball brick is subjected to a wet sand treatment).

p. 120



Retro

● RETRO — artificially aged brick.

p. 148



Tighel

● TIGHEL BRIK® — hand-formed engobed bricks with a perfectly smooth surface (additionally treated with water during the production process).

p. 136



Vormbak

● VORMBAK — hand-formed bricks without any characteristic texture (without wet sand treatment during production).

OBSIDIAAN wf / df p.10



WIJNBERGE WF p.12



BLACKSTONE wf p.13



PEELPAREL wf / df p.11



AURBERGINE wf p.14



AGAAT wf p.15



AMETIST wf / df p.16



IMPERIAL df p.20



BASS ROCK wf / df p.26



BLAUW PAARS ANTIK wf / df p.30



DOETINCHEM wf p.34



FOGO wf / df p.38



KAMELEON wf / df p.42



KOPER ROODBONT wf / df p.46



LA MEUSE wf / df p.50



ROSSO BONT wf / df p.51



LIMBURGS ORANGE BONT wf / df p.52



THARSIS wf / df p.56



OK wf / df p.57



TIFFANY wf / df p.60



OHRID df p.64



SALINA wf / df p.66



ONEGA wf / df p.67



ROYAL EMERALD wf / df p.70



Handform

● HANDFORM — a classic handmade brick with characteristic texture (during production the clay ball brick is subjected to a wet sand treatment).

TAIGA wf / df p.72



VOSTOK wf p.76



BARNSTEEN wf / df p.78



CANYON wf / df p.82



TATRA wf / df p.86



MYSTIQUE wf / df p.90



BALTIC AMBER df p.94



TAYGANYKA wf p.95



COMO wf / df p.98



LADOGA wf / df p.100



CARTHAGO wf / df p.104



CAMARQUE CARRERA wf p.110



CARTHAGO CARRERA wf / df p.118



OBSIDIAAN
wf / df

16040901 / 16250901

ENGELS BAKSTEEN

ENGELS BAKSTEEN

16040801 / 16250801

PEELPAREL
wf / df

●
Water absorption

10%

Mean compressive
strength

25

Freeze-thaw
resistance

F2

Consumption per m²

73 / 58



●
Water absorption

10%

Mean compressive
strength

25

Freeze-thaw
resistance

F2

Consumption per m²

73 / 58





Water absorption

10%

Mean compressive strength

25

Freeze-thaw resistance

F2

Consumption per m²

73



Water absorption

10%

Mean compressive strength

25

Freeze-thaw resistance

F2

Consumption per m²

73



AUBERGINE
wf

16040201

ENGELS BAKSTEEN

ENGELS BAKSTEEN

16040281

AGAAT
wf

●
Water absorption

10%

Mean compressive
strength

25

Freeze-thaw
resistance

F2

Consumption per m²

73



●
Water absorption

10%

Mean compressive
strength

25

Freeze-thaw
resistance

F2

Consumption per m²

73



●
Water absorption

10%

Mean compressive
strength

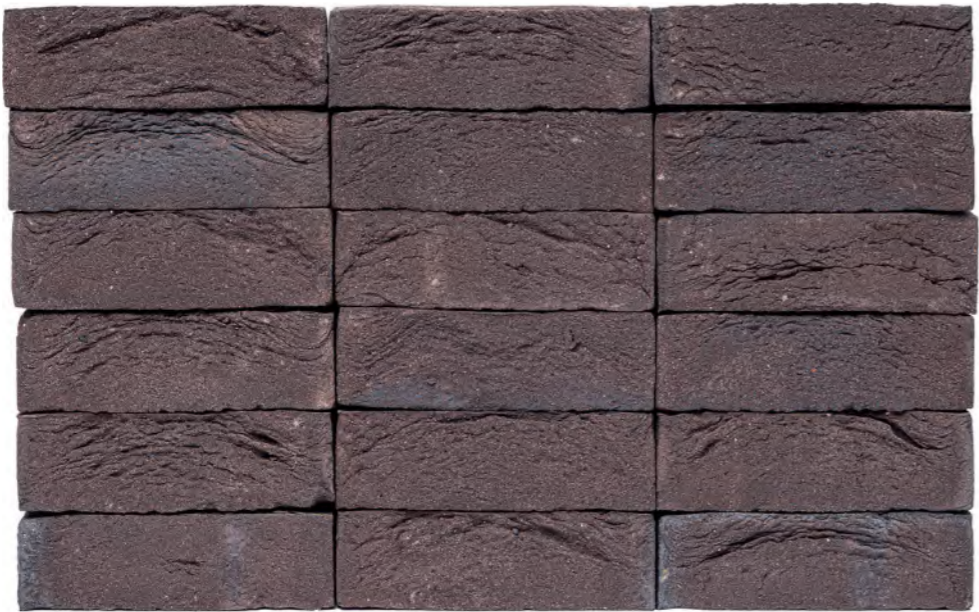
25

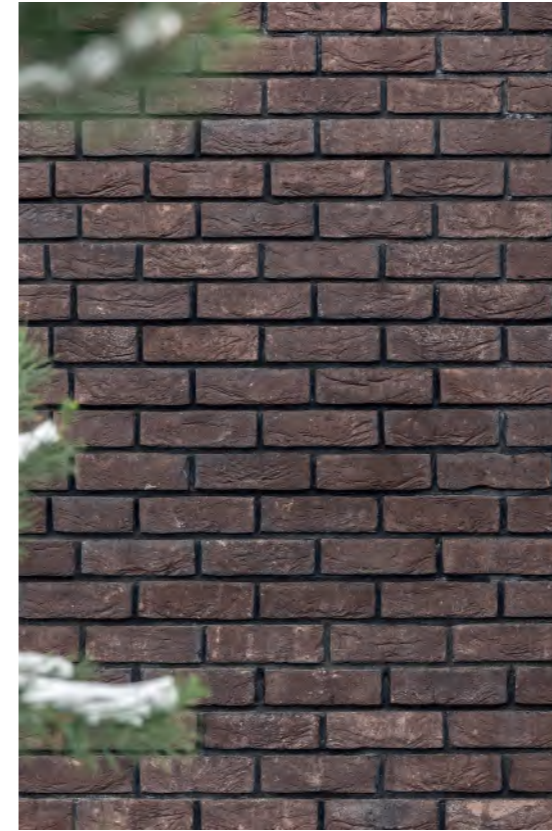
Freeze-thaw
resistance

F2

Consumption per m²

73 / 58





●
Water absorption

10%

Mean compressive
strength

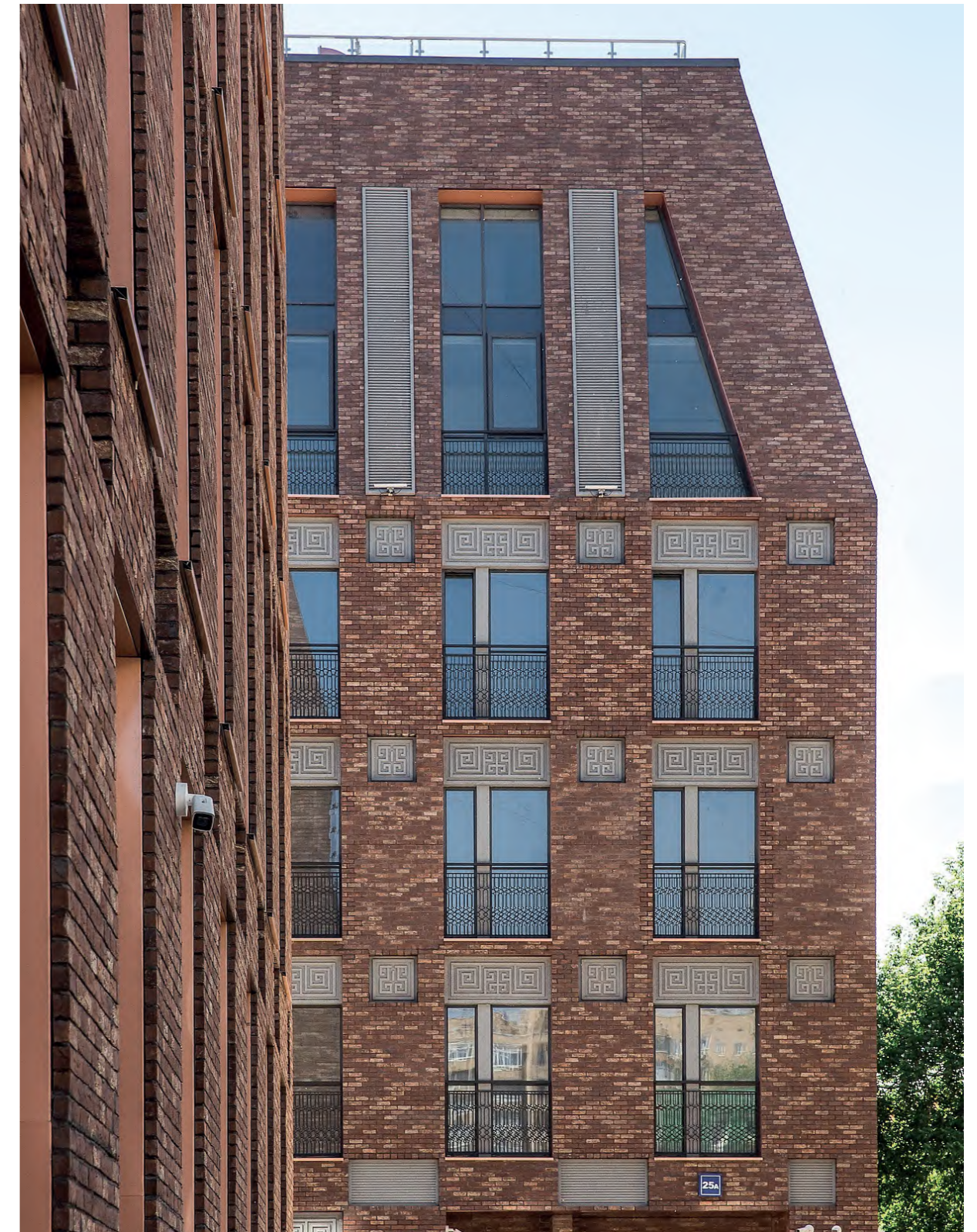
25

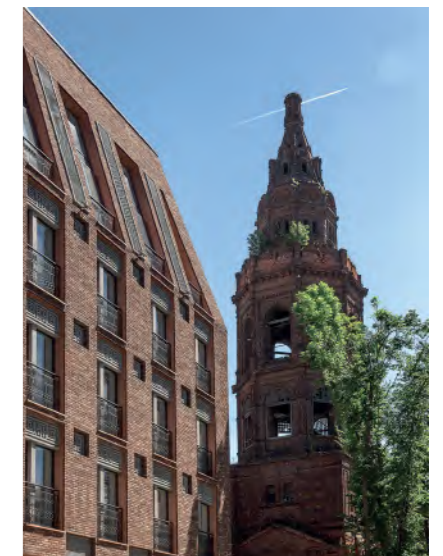
Freeze-thaw
resistance

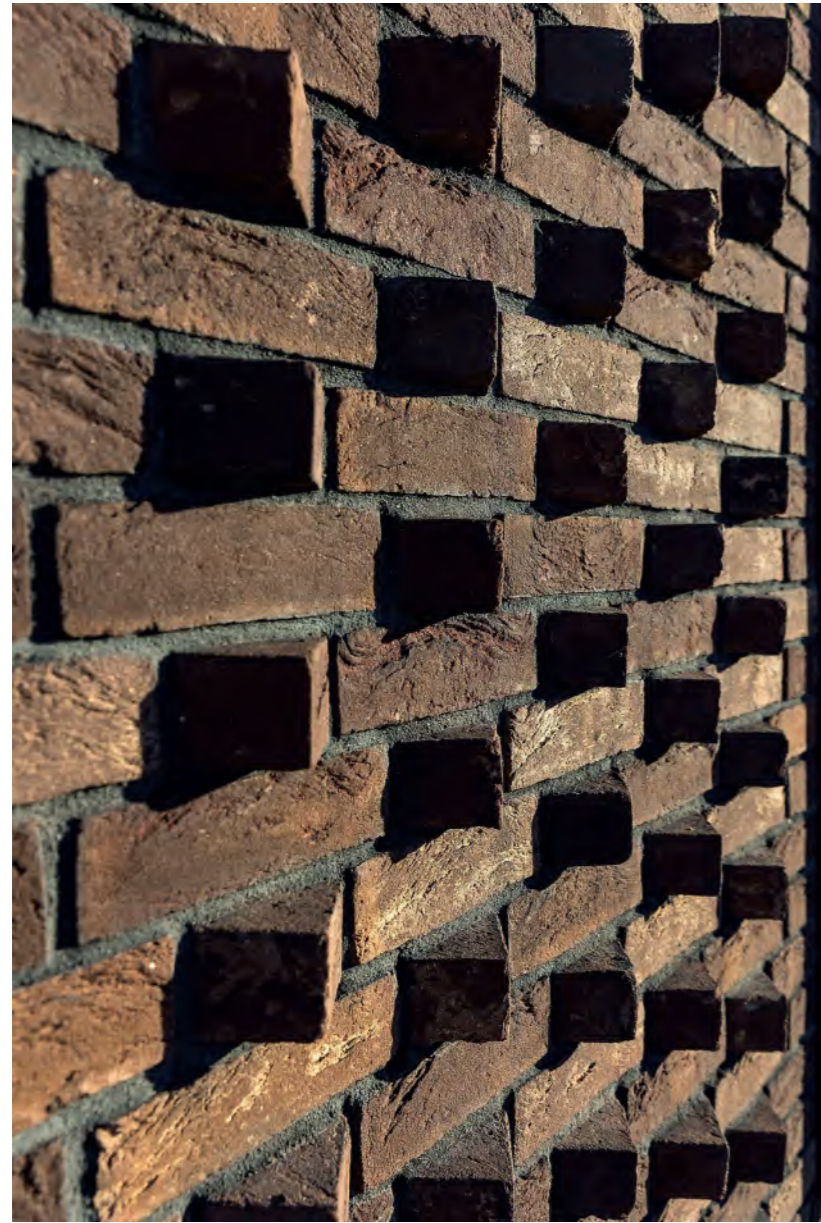
F2

Consumption per m²

58







●
Water absorption

10%

Mean compressive
strength

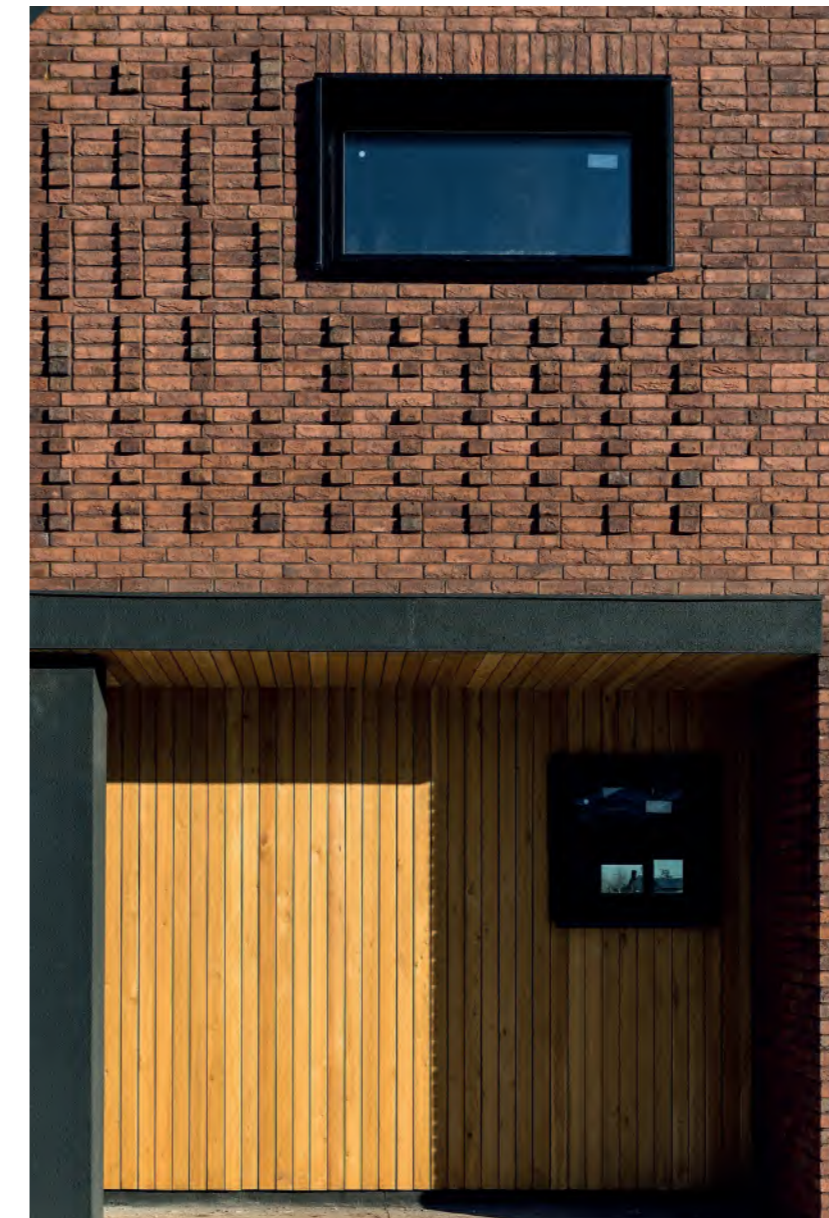
17,5

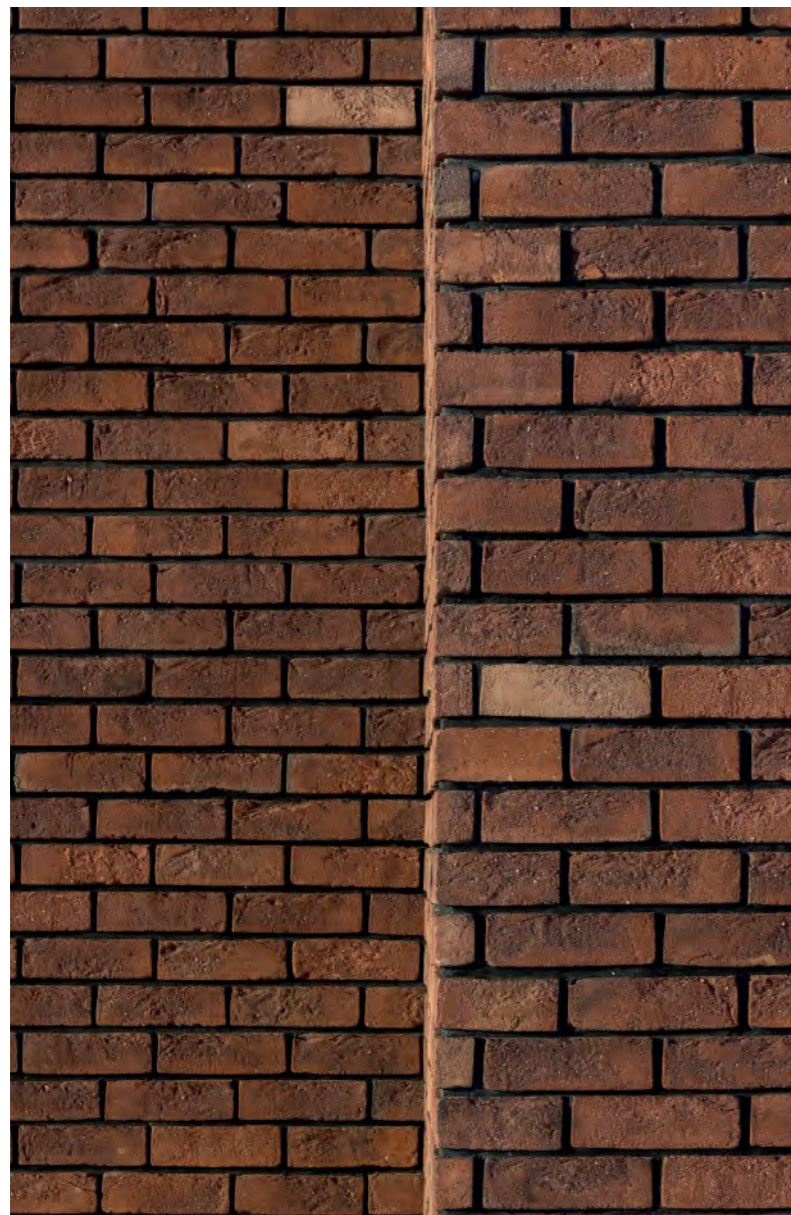
Freeze-thaw
resistance

F2

Consumption per m²

73 / 58





●
Water absorption

10%

Mean compressive
strength

20

Freeze-thaw
resistance

F2

Consumption per m²

73 / 58





●
Water absorption

10%

Mean compressive
strength

25

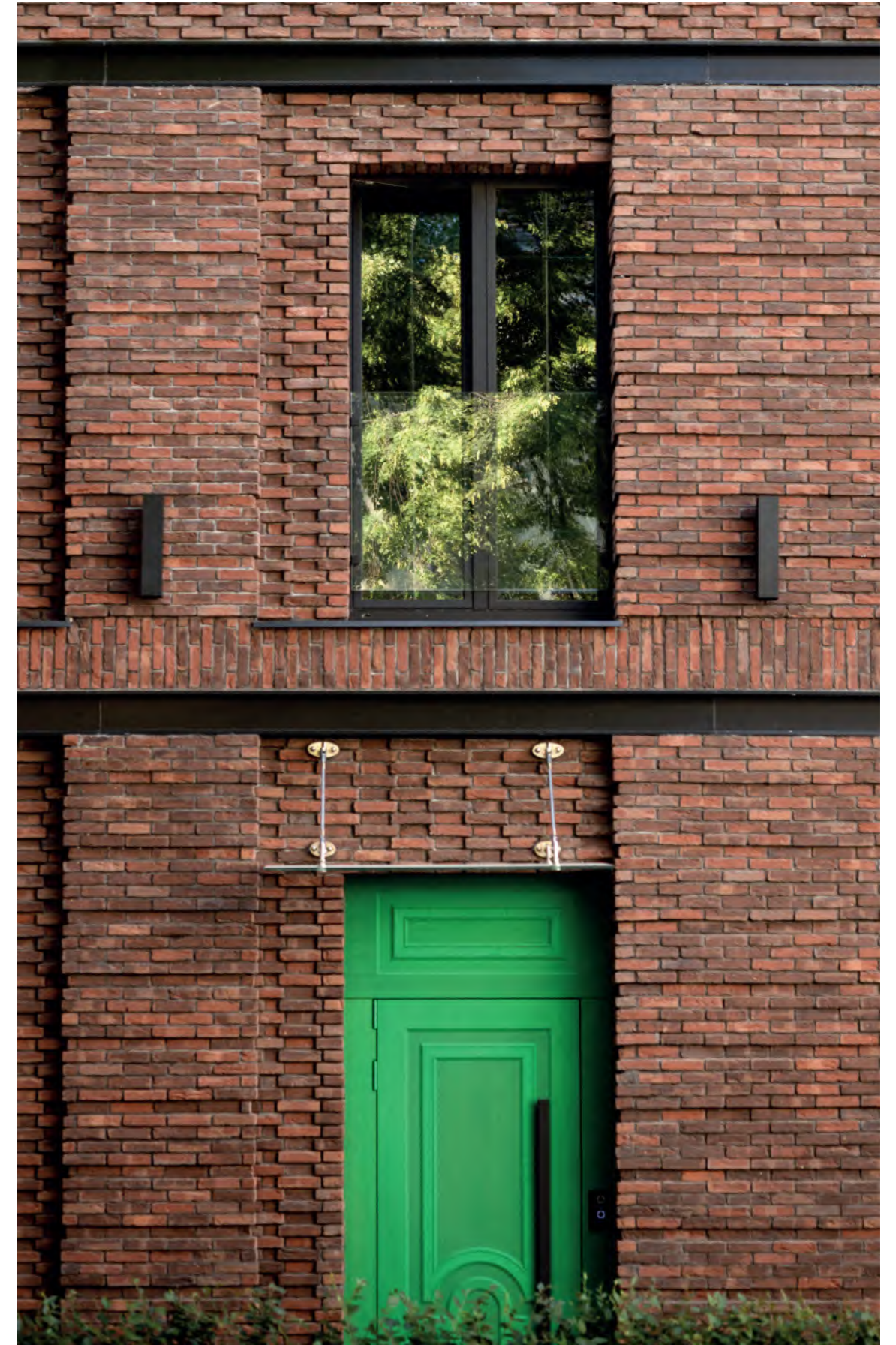
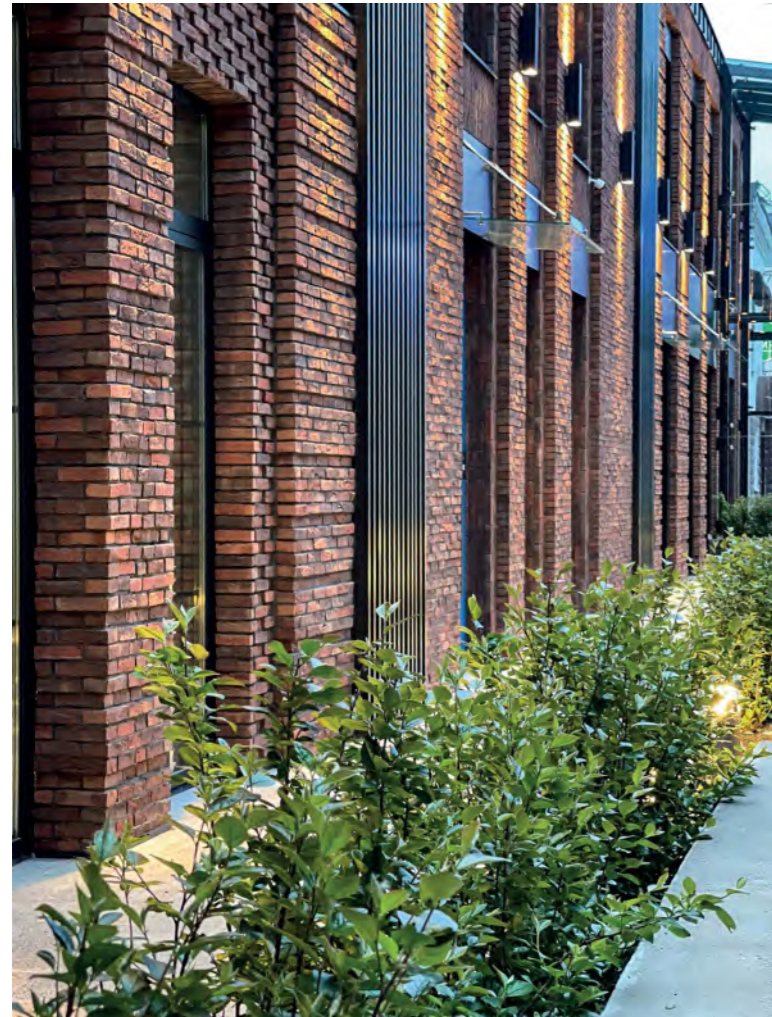
Freeze-thaw
resistance

F2

Consumption per m²

73





●
Water absorption

12%

Mean compressive
strength

30

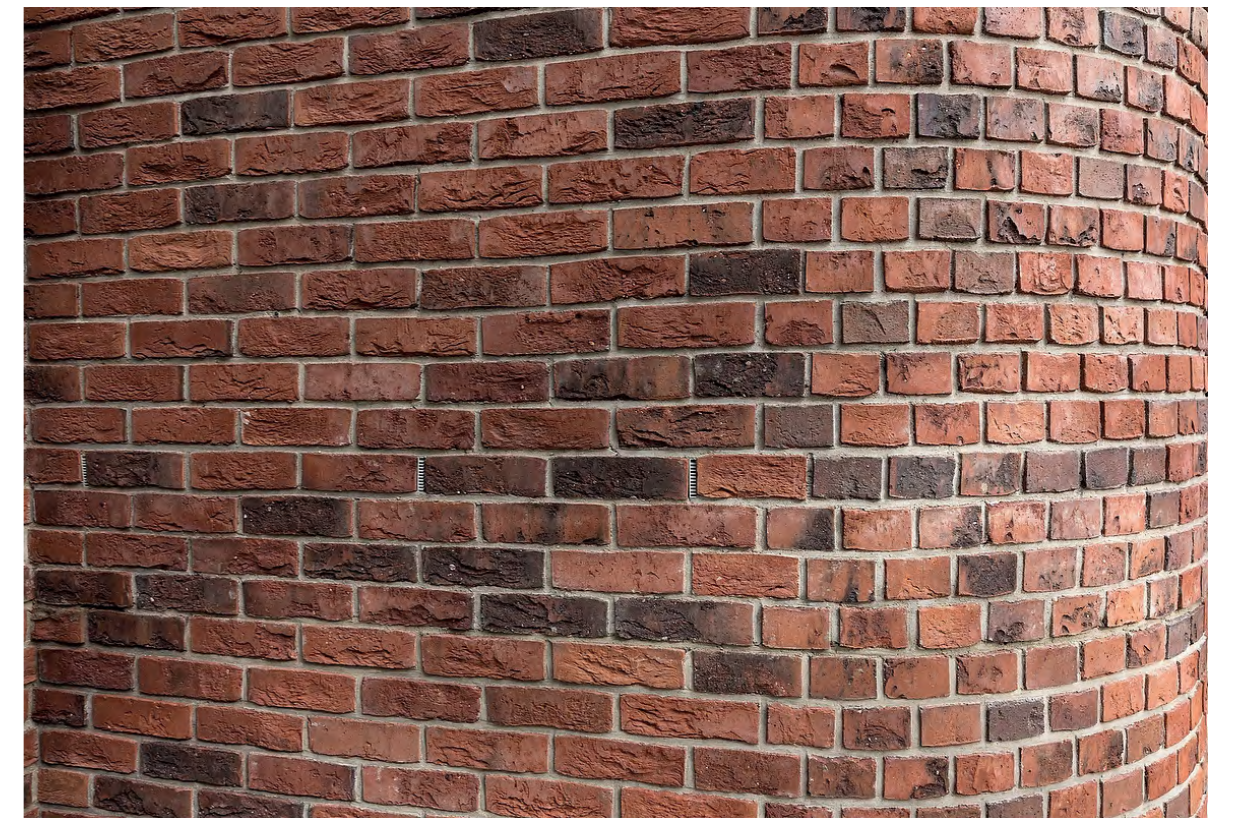
Freeze-thaw
resistance

F2

Consumption per m²

73 / 58





●
Water absorption

10%

Mean compressive
strength

20

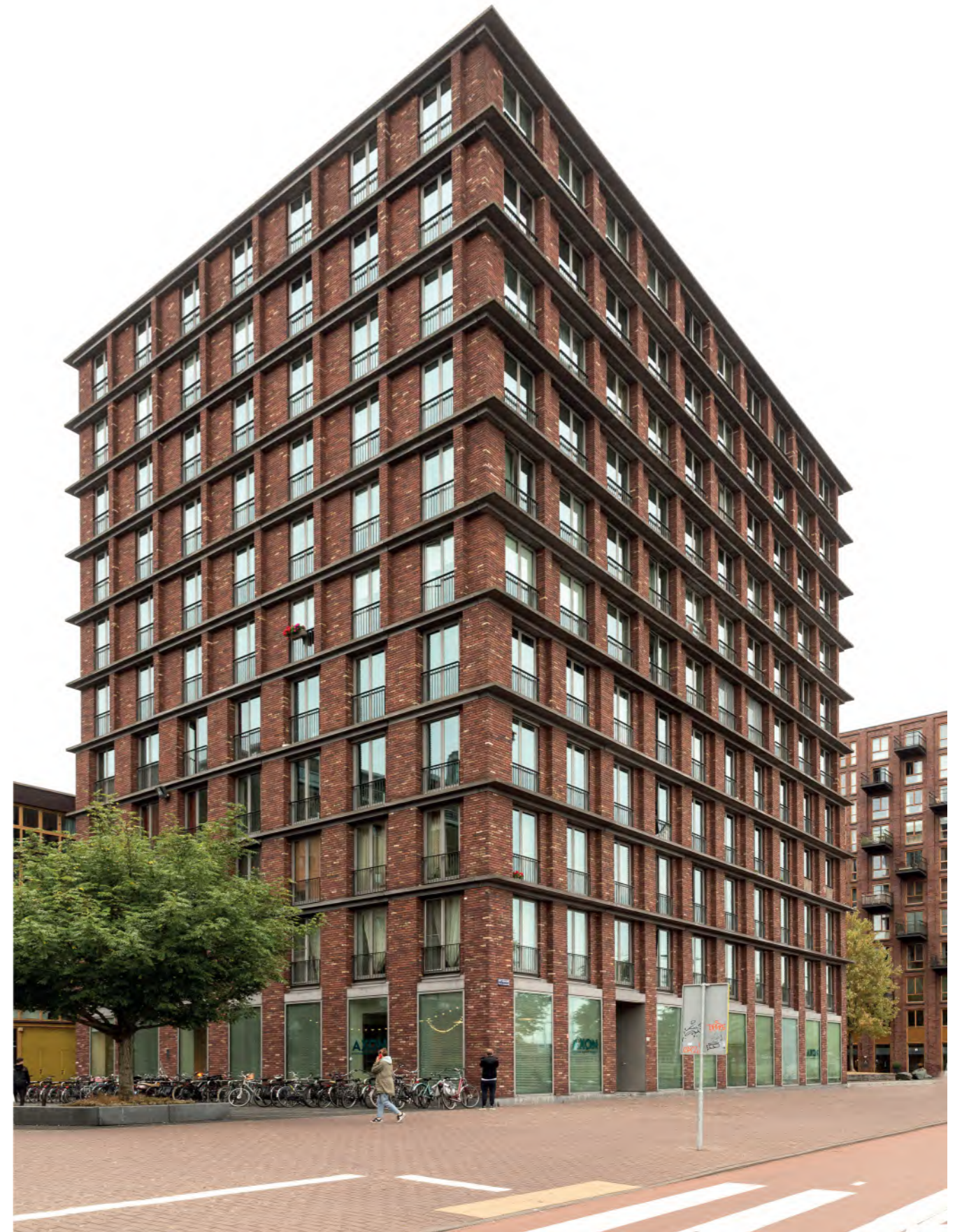
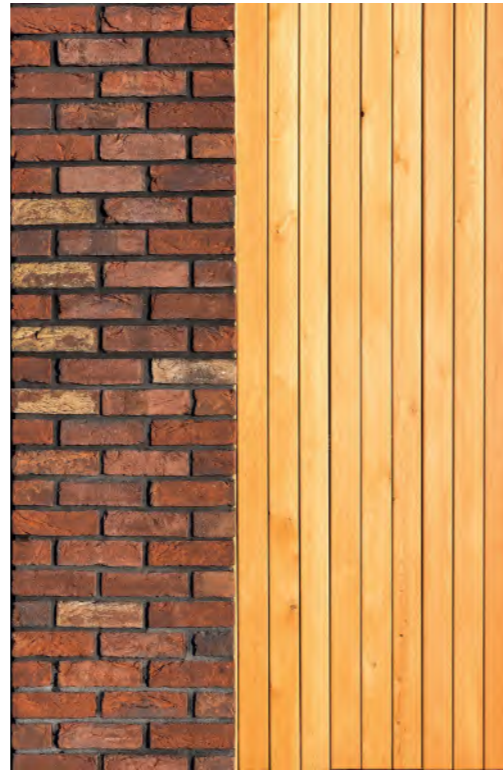
Freeze-thaw
resistance

F2

Consumption per m²

73 / 58





●
Water absorption

10%

Mean compressive
strength

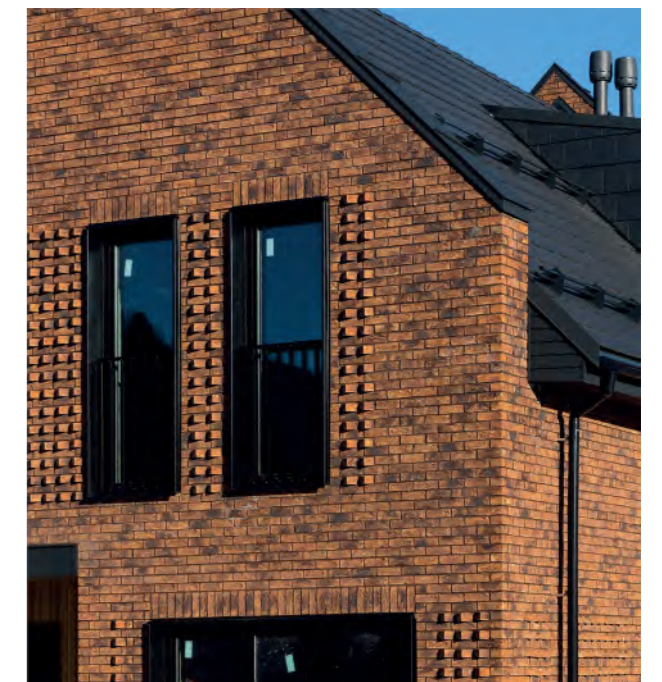
17,5

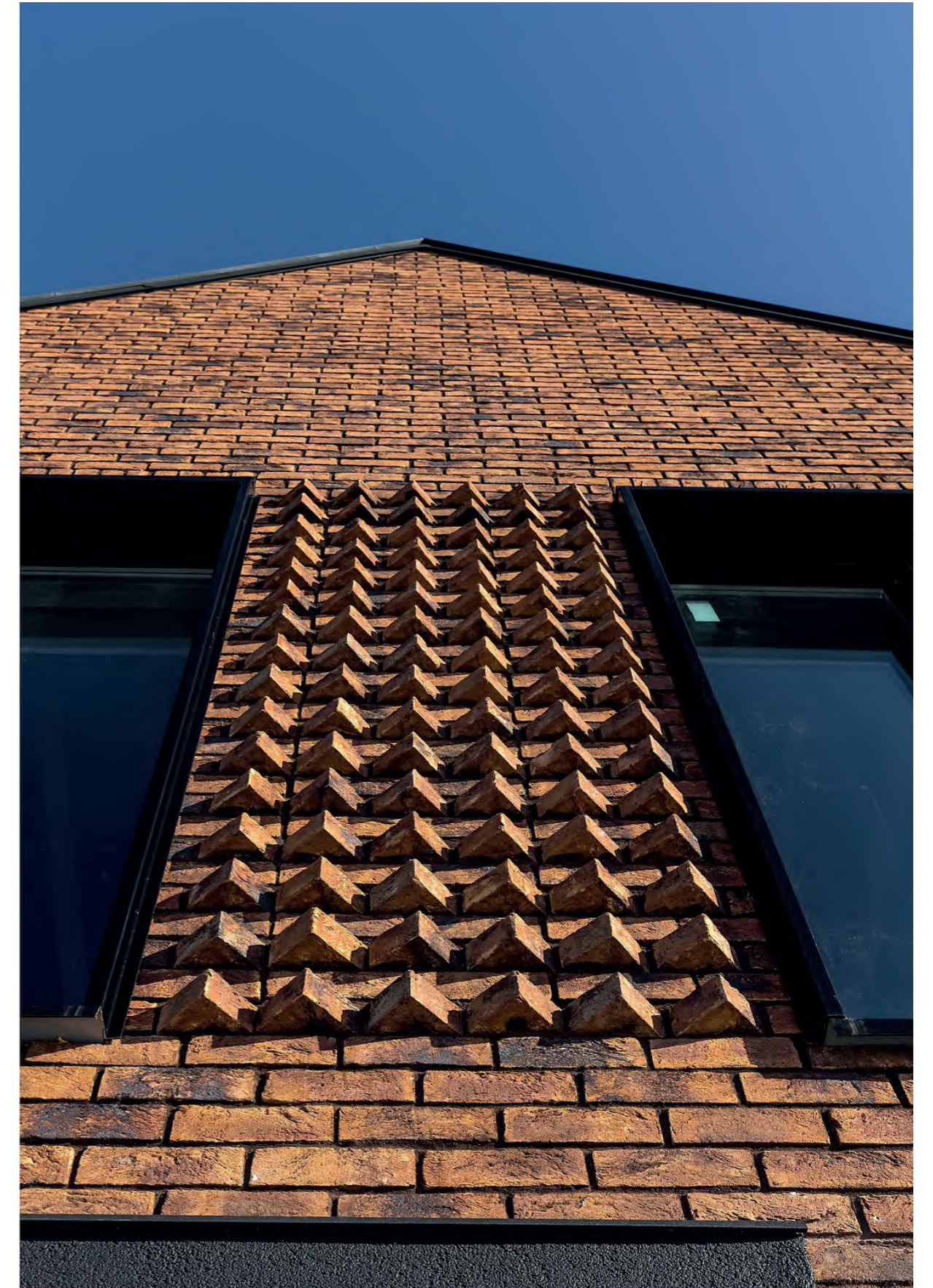
Freeze-thaw
resistance

F2

Consumption per m²

73 / 58





LA MEUSE
wf /df

16042101 / 16252101

ENGELS BAKSTEEN

ENGELS BAKSTEEN

16052801

ROSSO BONT
wf

●
Water absorption

10%

Mean compressive
strength

30

Freeze-thaw
resistance

F2

Consumption per m²

73 / 58



●
Water absorption

16%

Mean compressive
strength

12,5

Freeze-thaw
resistance

F2

Consumption per m²

73



●
Water absorption

16%

Mean compressive
strength

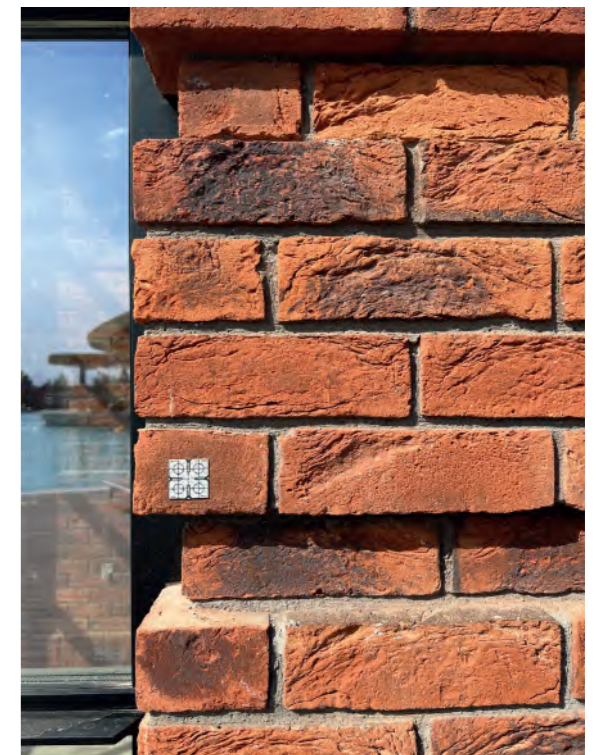
12,5

Freeze-thaw
resistance

F2

Consumption per m²

73 / 58





●
Water absorption

14%

Mean compressive strength

15

Freeze-thaw resistance

F2

Consumption per m²

73 / 58



●
Water absorption

14%

Mean compressive strength

15

Freeze-thaw resistance

F2

Consumption per m²

73 / 58



●
Water absorption

10%

Mean compressive
strength

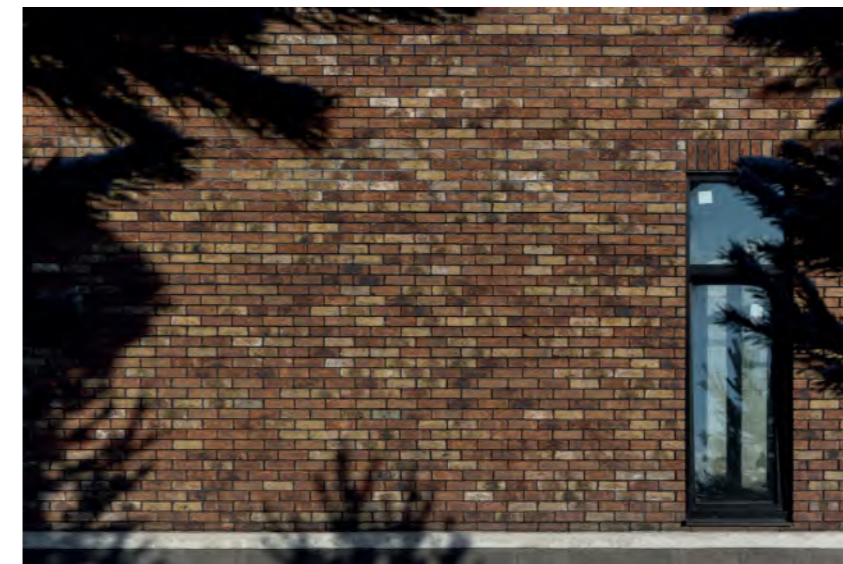
17,5

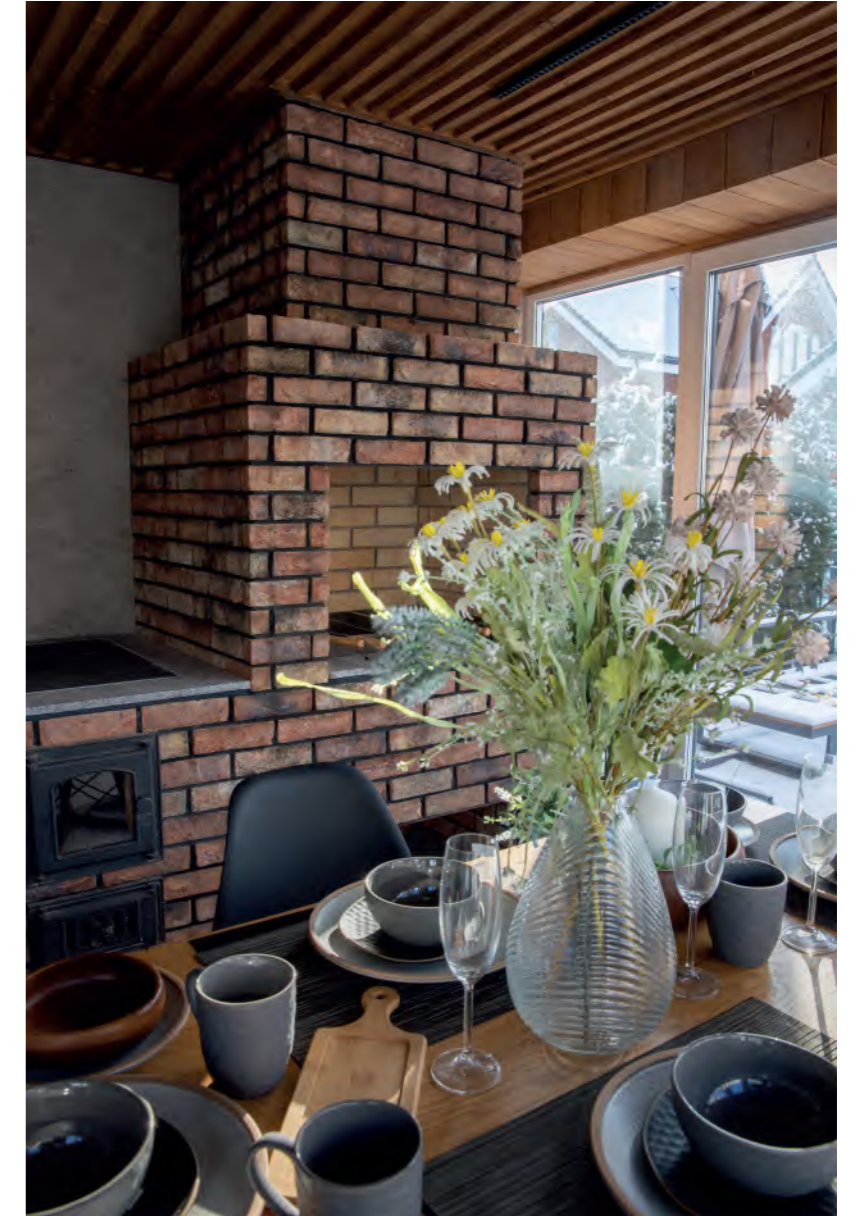
Freeze-thaw
resistance

F2

Consumption per m²

73 / 58





●
Water absorption

8%

Mean compressive
strength

25

Freeze-thaw
resistance

F2

Consumption per m²

58



SALINA
wf / df

26044031 / 26144031

ENGELS BAKSTEEN

ENGELS BAKSTEEN

16058201 / 16258201

ONEGA
wf / df

●
Water absorption

10%

Mean compressive strength

25

Freeze-thaw resistance

F2

Consumption per m²

73 / 58



●
Water absorption

8%

Mean compressive strength

25

Freeze-thaw resistance

F2

Consumption per m²

73 / 58





●
Water absorption

10%

Mean compressive
strength

17,5

Freeze-thaw
resistance

F2

Consumption per m²

73 / 58



●
Water absorption

10%

Mean compressive
strength

20

Freeze-thaw
resistance

F2

Consumption per m²

73 / 58





●
Water absorption

8%

Mean compressive
strength

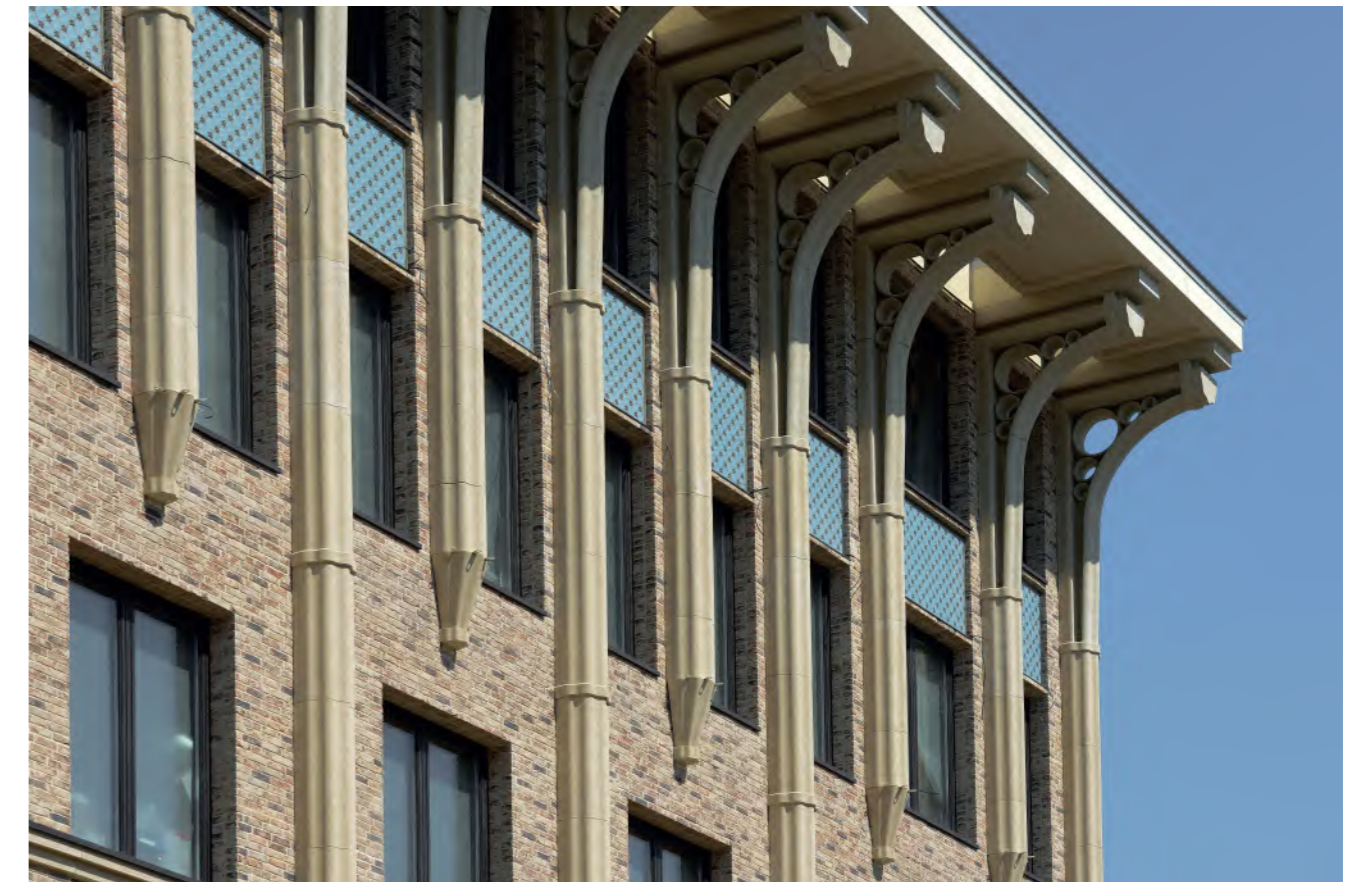
25

Freeze-thaw
resistance

F2

Consumption per m²

73



●
Water absorption

10%

Mean compressive
strength

17,5

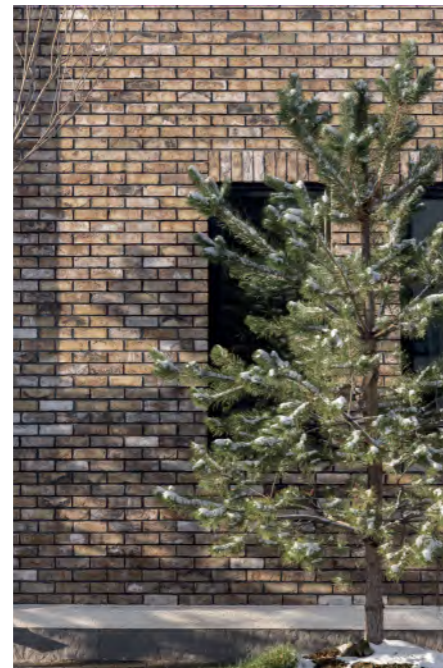
Freeze-thaw
resistance

F2

Consumption per m²

73 / 58





●
Water absorption

10%

Mean compressive
strength

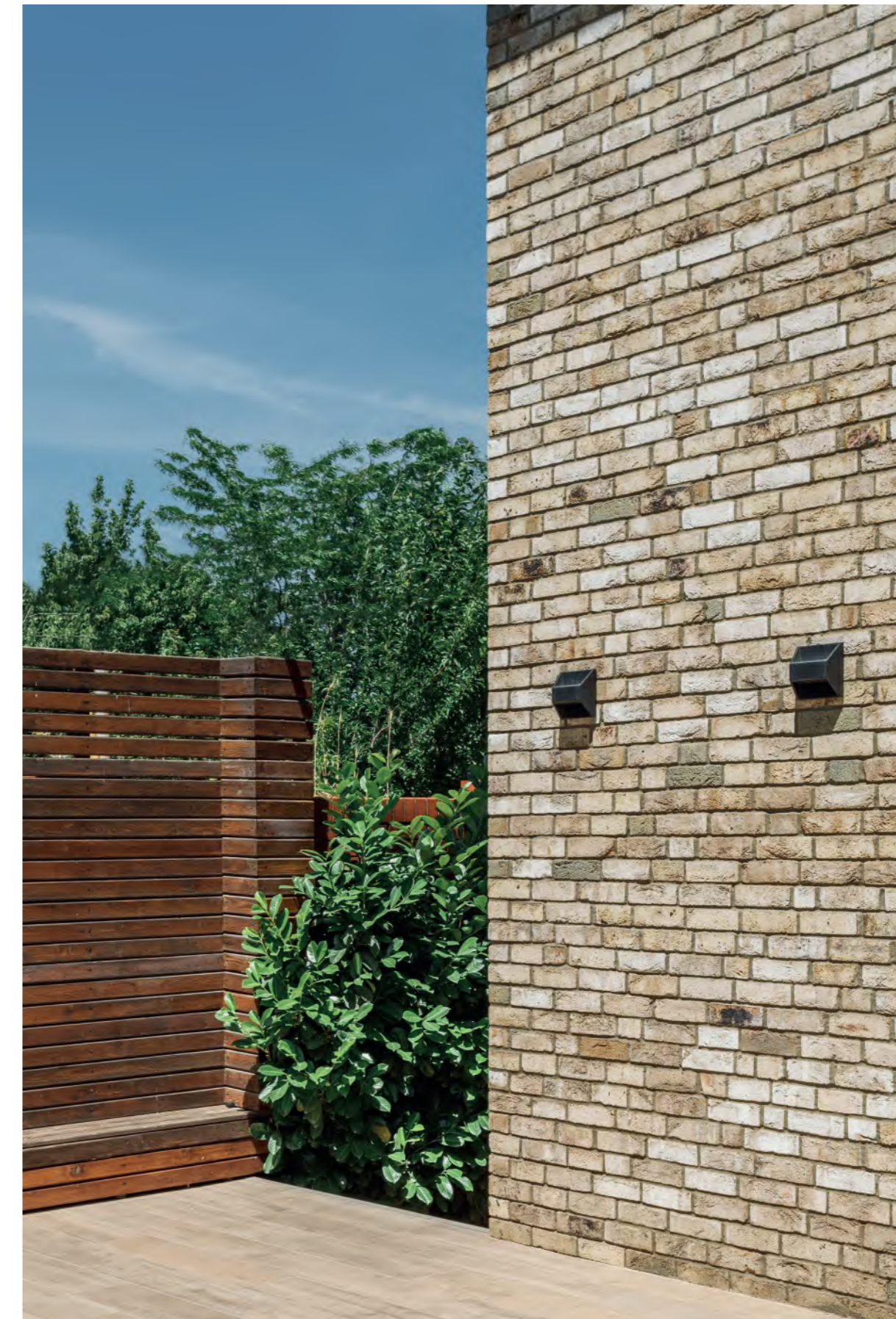
17,5

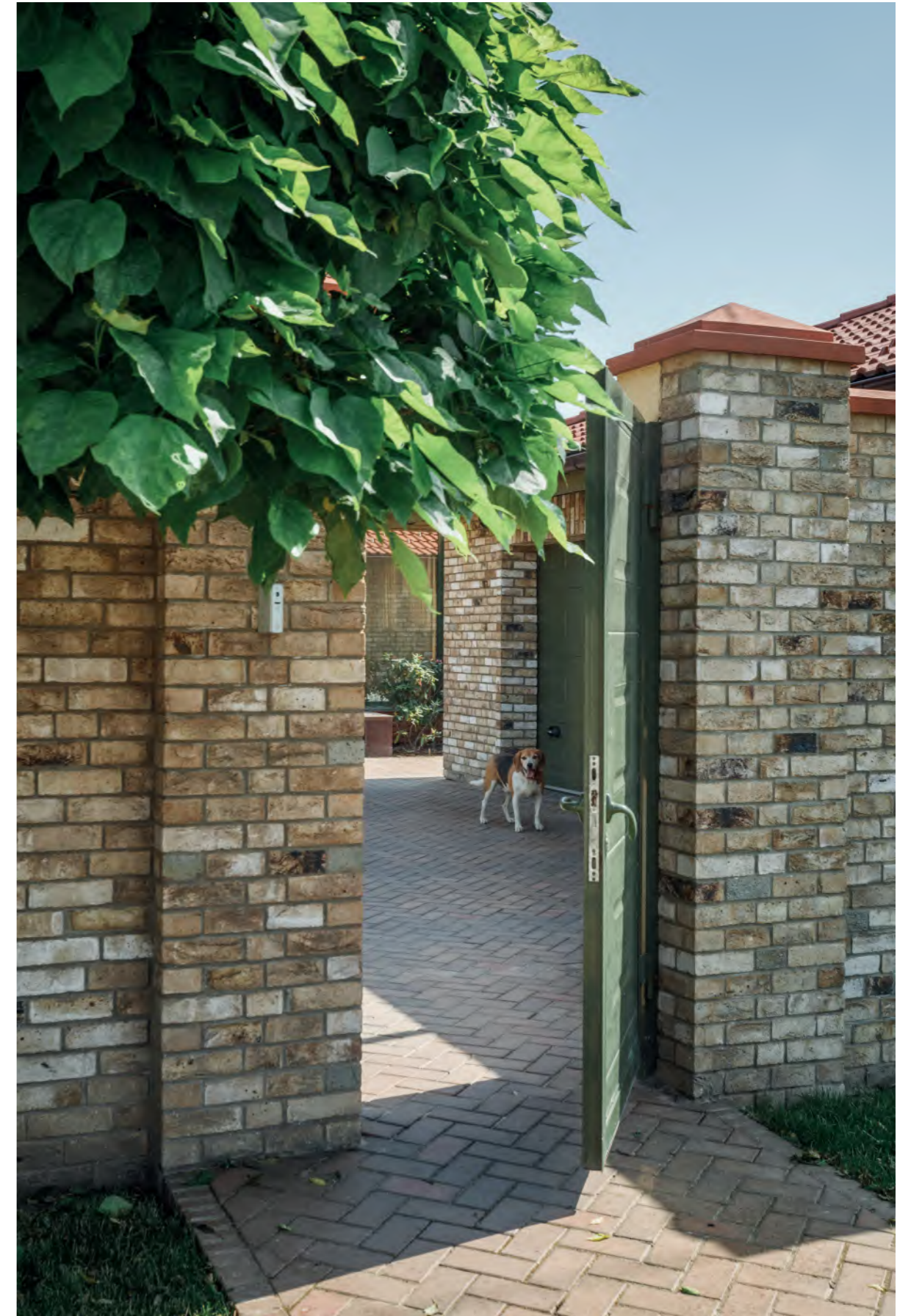
Freeze-thaw
resistance

F2

Consumption per m²

73 / 58





●
Water absorption

16%

Mean compressive
strength

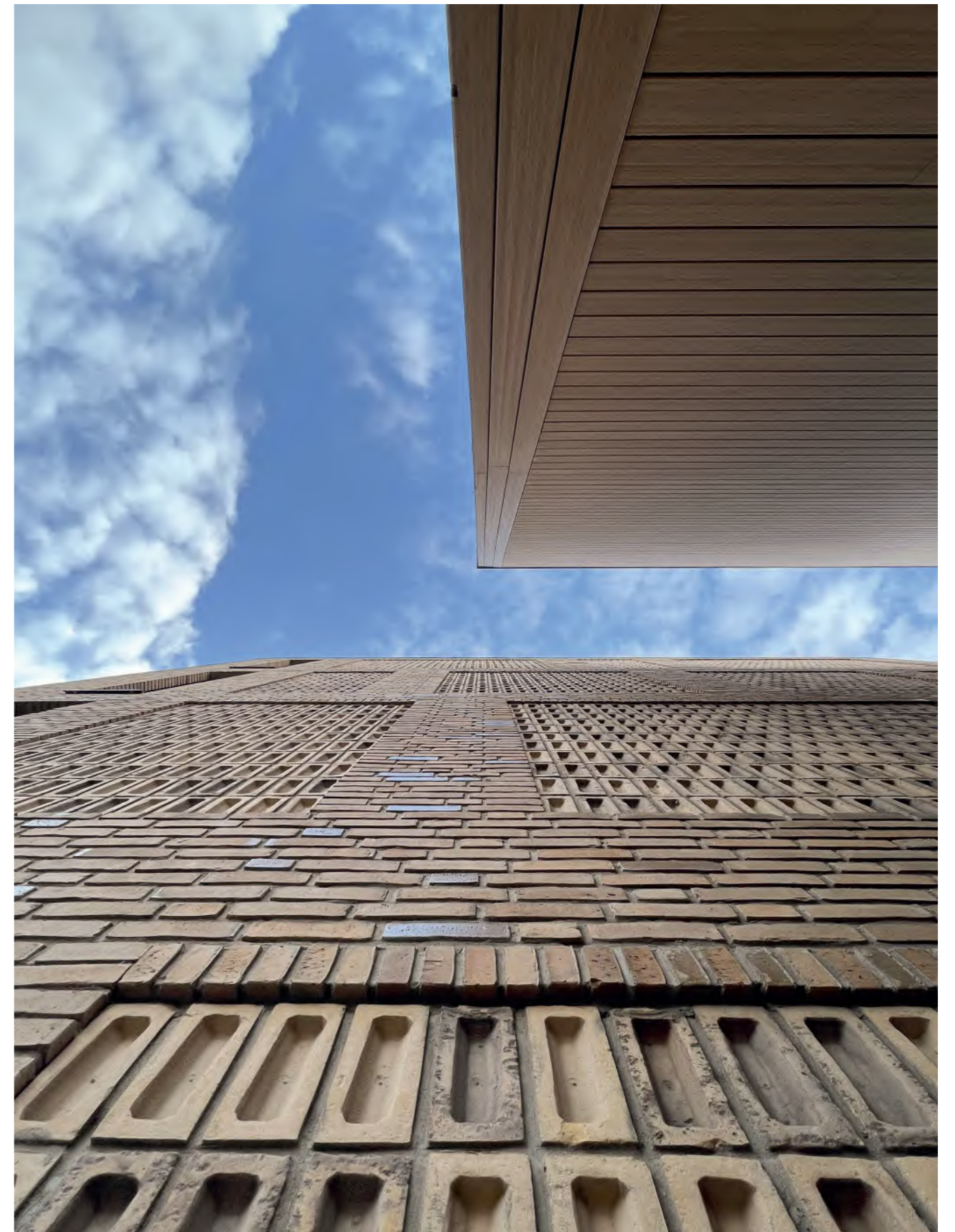
15

Freeze-thaw
resistance

F2

Consumption per m²

73 / 58





●
Water absorption

10%

Mean compressive
strength

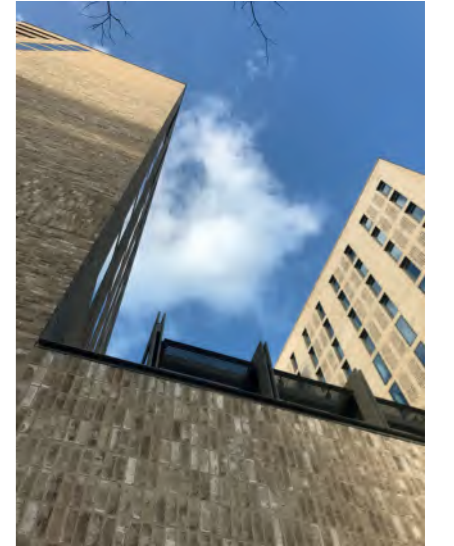
17,5

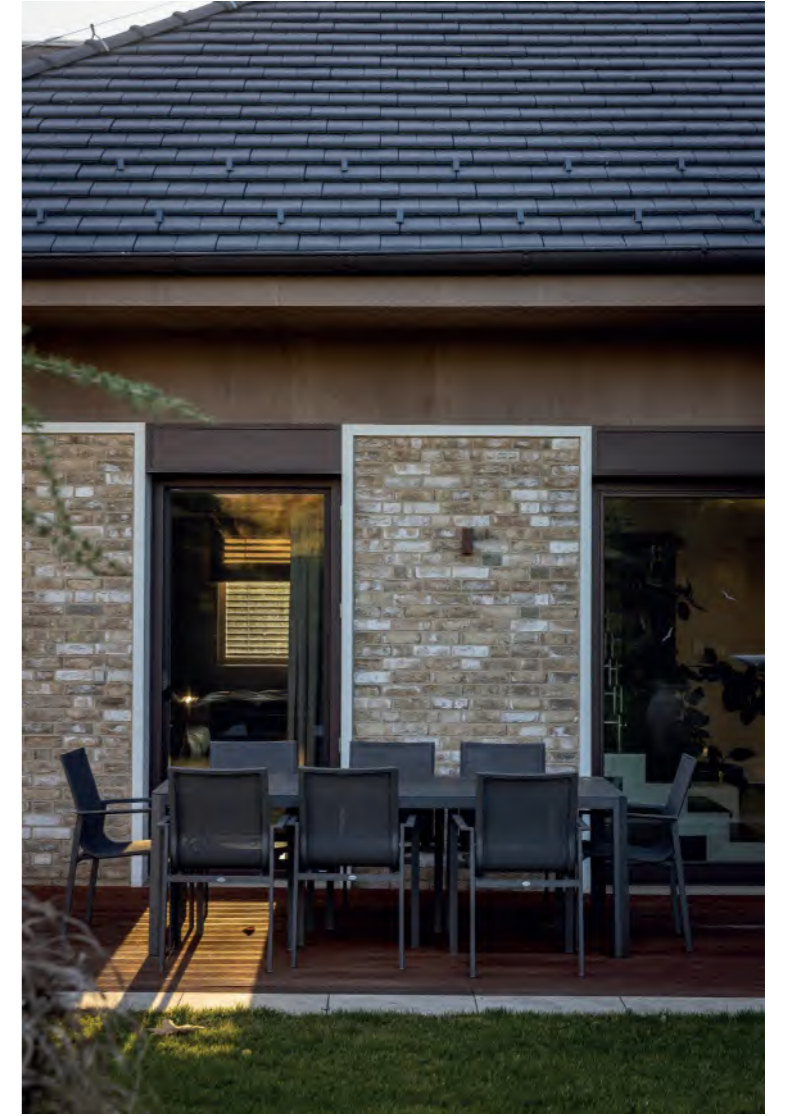
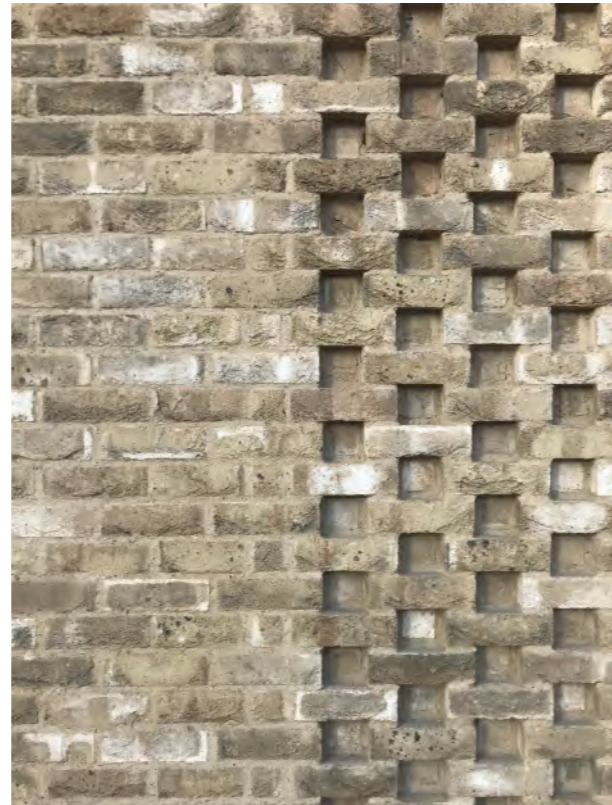
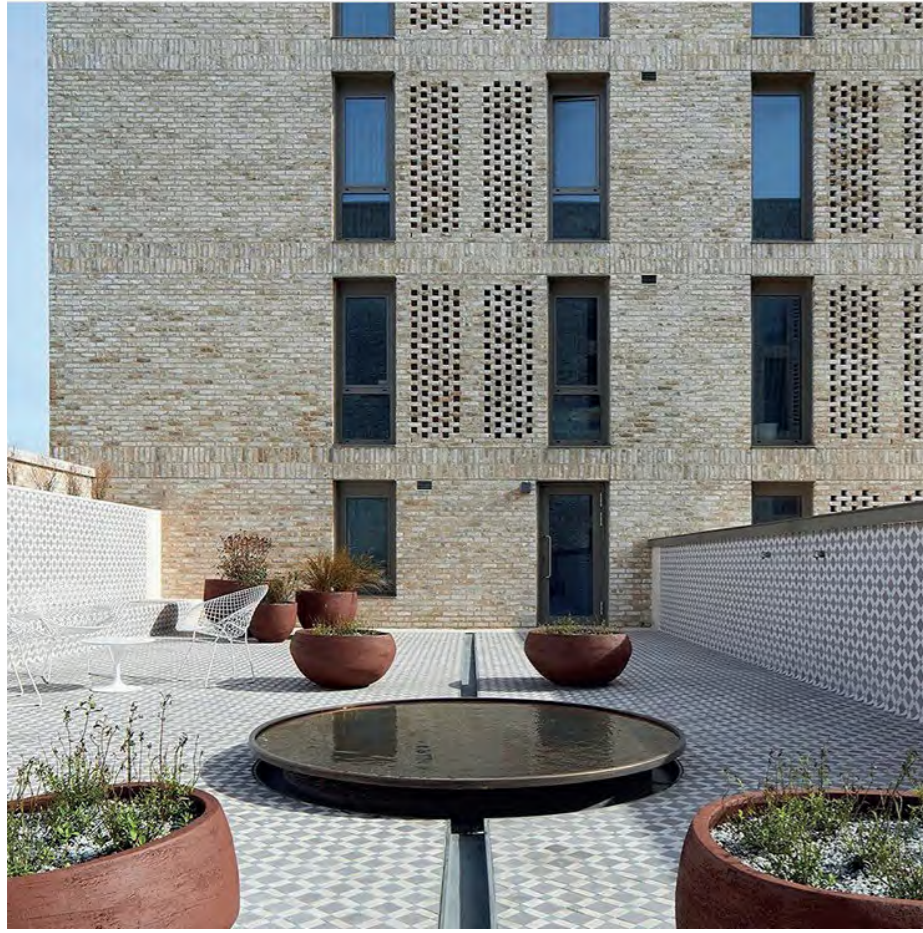
Freeze-thaw
resistance

F2

Consumption per m²

73 / 58





BALTIC AMBER
df

16258801

ENGELS BAKSTEEN

ENGELS BAKSTEEN

16058701

TANGANYIKA
wf

●
Water absorption

10%

Mean compressive
strength

15

Freeze-thaw
resistance

F2

Consumption per m²

58



●
Water absorption

8%

Mean compressive
strength

25

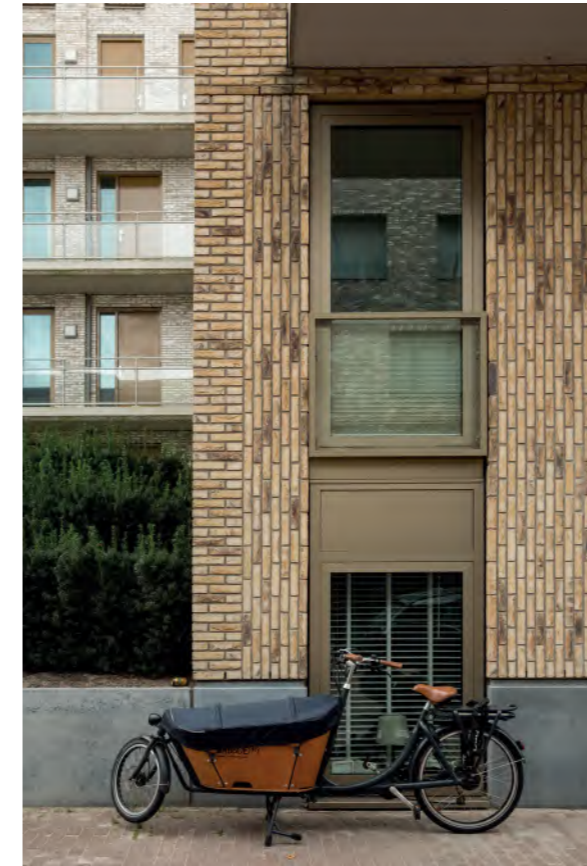
Freeze-thaw
resistance

F2

Consumption per m²

73





●
Water absorption

8%

Mean compressive
strength

25

Freeze-thaw
resistance

F2

Consumption per m²

73 / 58



●
Water absorption

8%

Mean compressive
strength

25

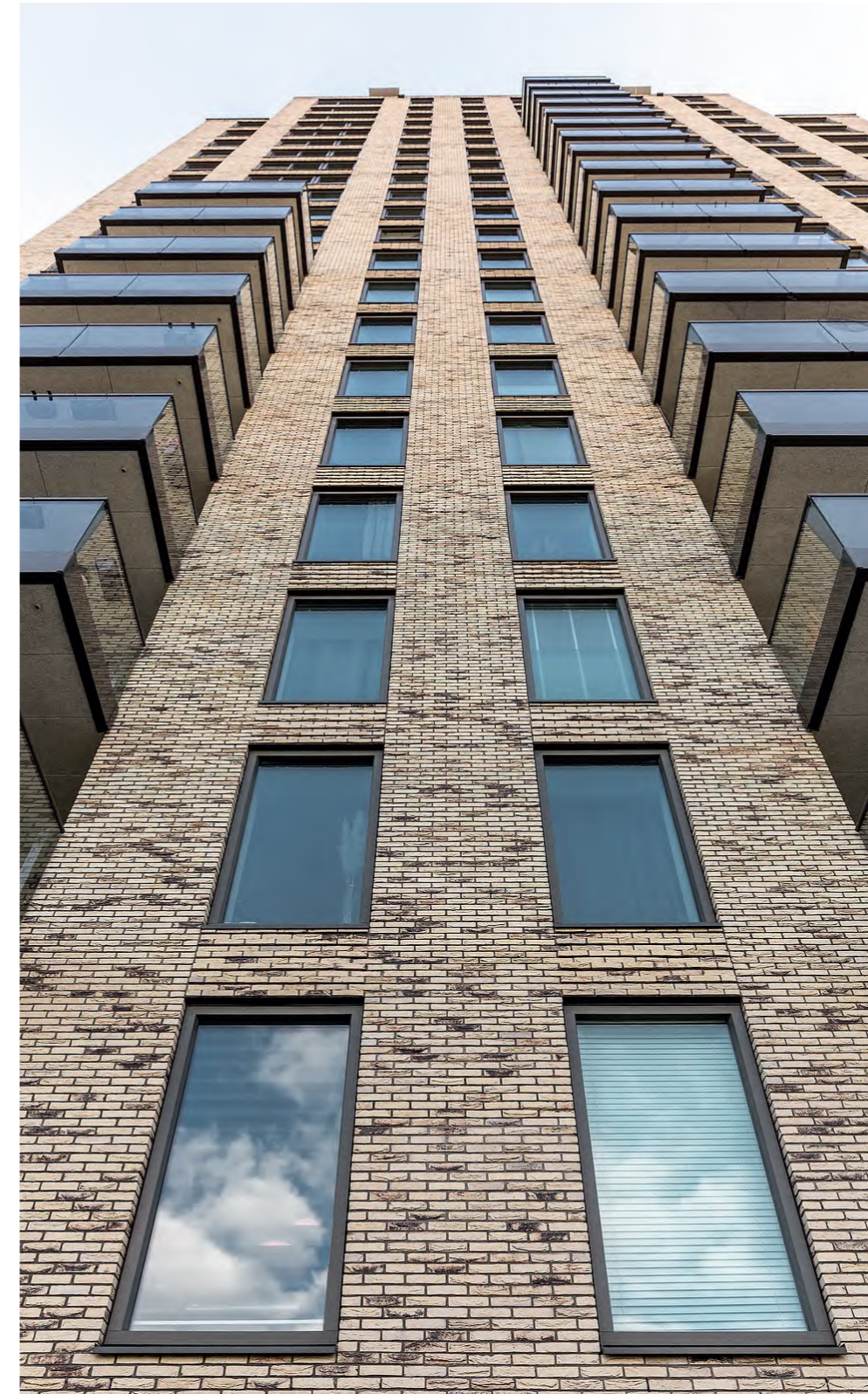
Freeze-thaw
resistance

F2

Consumption per m²

73 / 58





●
Water absorption

10%

Mean compressive
strength

17,5

Freeze-thaw
resistance

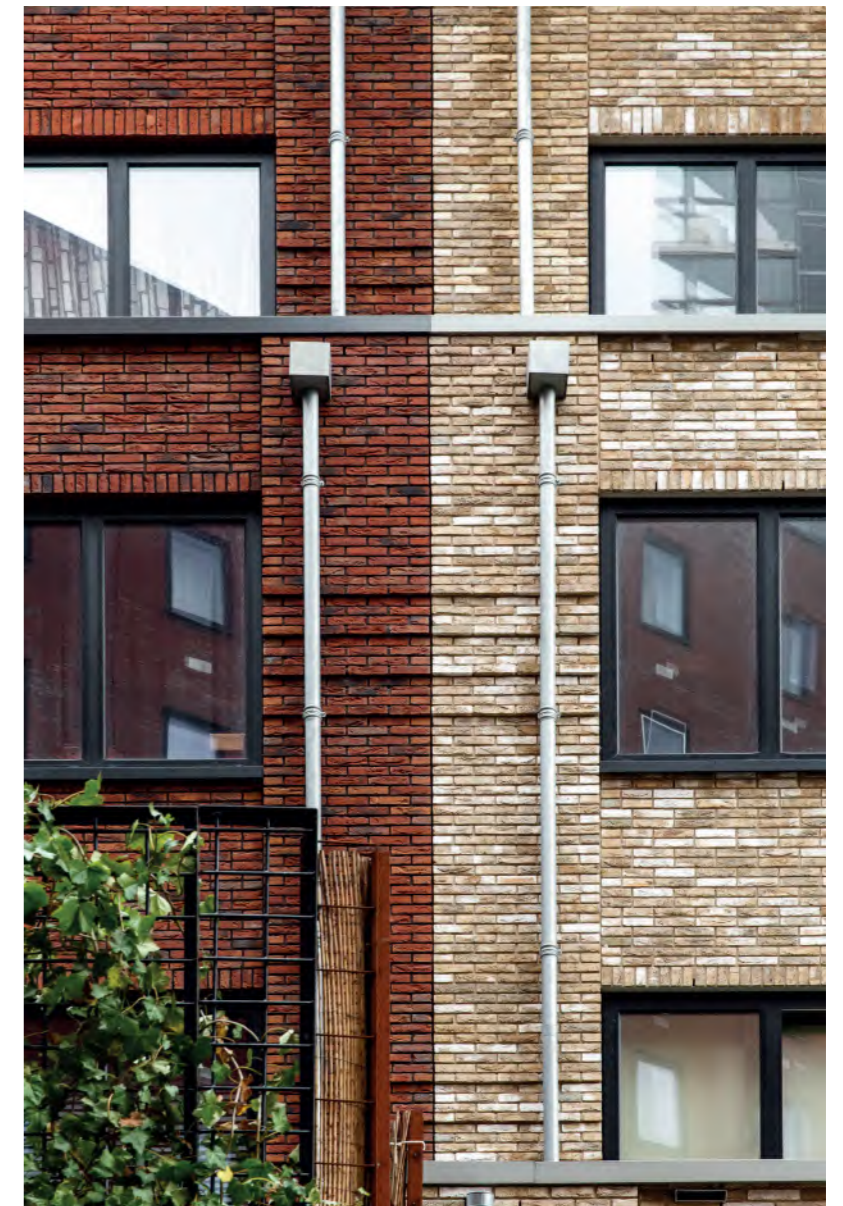
F2

Consumption per m²

73 / 58







●
Water absorption

10%

Mean compressive
strength

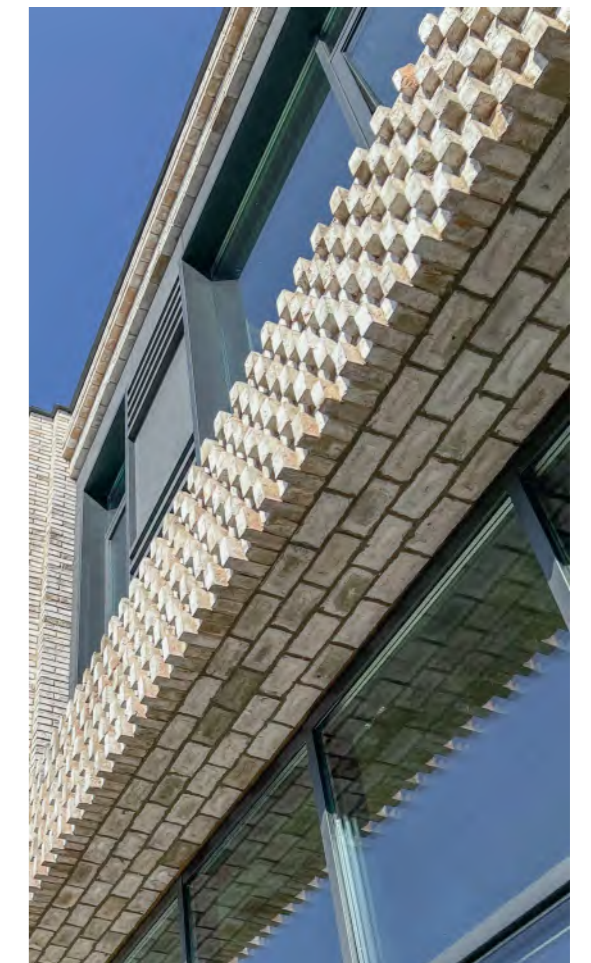
17,5

Freeze-thaw
resistance

F2

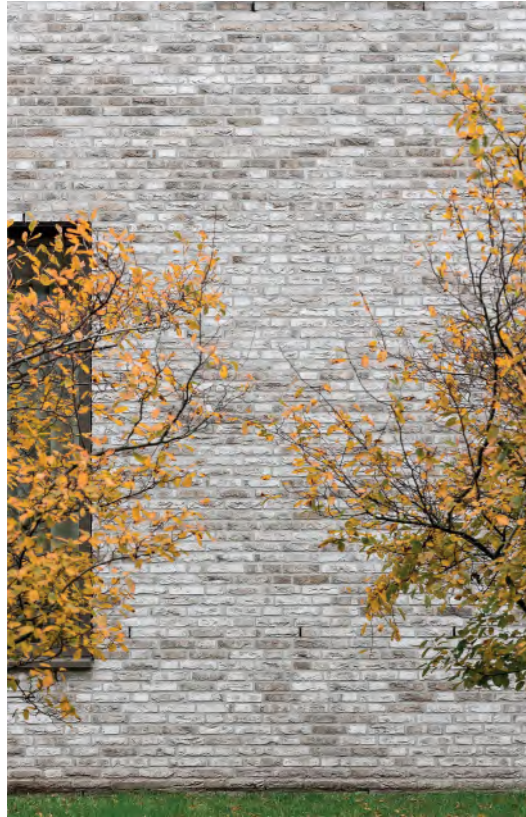
Consumption per m²

73









●
Water absorption

10%

Mean compressive
strength

17,5

Freeze-thaw
resistance

F2

Consumption per m²

73 / 58



POMPEII ANTIEK wf / df p.122



RENAISSANCE ANTIEK wf / df p.123



HERMITAGE ANTIEK wf / df p.124



Retro

● RETRO — artificially aged brick.

TIFFANY ANTIEK wf / df p.128



TOSCANE ANTIEK wf / df p.132



POMPEII ANTIEK
wf / df

16045369 / 16255379

ENGELS BAKSTEEN

ENGELS BAKSTEEN

16046069 / 16256079

RENAISSANCE
ANTIEK
wf / df

●
Water absorption

10%

Mean compressive
strength

20

Freeze-thaw
resistance

F2

Consumption per m²

73 / 58



●
Water absorption

10%

Mean compressive
strength

20

Freeze-thaw
resistance

F2

Consumption per m²

73 / 58



●
Water absorption

10%

Mean compressive
strength

20

Freeze-thaw
resistance

F2

Consumption per m²

73 / 58





●
Water absorption

10%

Mean compressive
strength

17,5

Freeze-thaw
resistance

F2

Consumption per m²

73 / 58





●
Water absorption

10%

Mean compressive
strength

17,5

Freeze-thaw
resistance

F2

Consumption per m²

73 / 58





CARBON wf / df p.138



AUBERGINE wf / df p.140



BRUIN wf / df p.141



ROYAL ROSSO wf / df p.142



VULCANO wf / df p.143



OLD ENGLISH RED df p.144



Vormbak

● VORMBAK — hand-formed bricks without any characteristic texture (without wet sand treatment during production).

OLD HALBURY BLEND df p.145



ELDORADO wf p.146



●
Water absorption

12%

Mean compressive
strength

30

Freeze-thaw
resistance

F2

Consumption per m²

73 / 58



AUBERGINE
wf / df

24042201 / 24142201

ENGELS BAKSTEEN

ENGELS BAKSTEEN

24042701 / 24142701

BRUIN
wf / df

●
Water absorption

12%

Mean compressive
strength

30

Freeze-thaw
resistance

F2

Consumption per m²

73 / 58



●
Water absorption

12%

Mean compressive
strength

30

Freeze-thaw
resistance

F2

Consumption per m²

73 / 58



ROYAL ROSSO
wf / df

24048001 / 24148001

ENGELS BAKSTEEN

ENGELS BAKSTEEN

24049001 / 24149001

VULCANO
wf / df

●
Water absorption

12%

Mean compressive strength

30

Freeze-thaw resistance

F2

Consumption per m²

73 / 58



●
Water absorption

12%

Mean compressive strength

30

Freeze-thaw resistance

F2

Consumption per m²

73 / 58



OLD ENGLISH
RED
df

24158601

ENGELS BAKSTEEN

ENGELS BAKSTEEN

24159769

OLD HALBURY
BLEND
df

●
Water absorption

12%

Mean compressive
strength

15

Freeze-thaw
resistance

F2

Consumption per m²

58



●
Water absorption

14%

Mean compressive
strength

15

Freeze-thaw
resistance

F2

Consumption per m²

58



●
Water absorption

10%

Mean compressive
strength

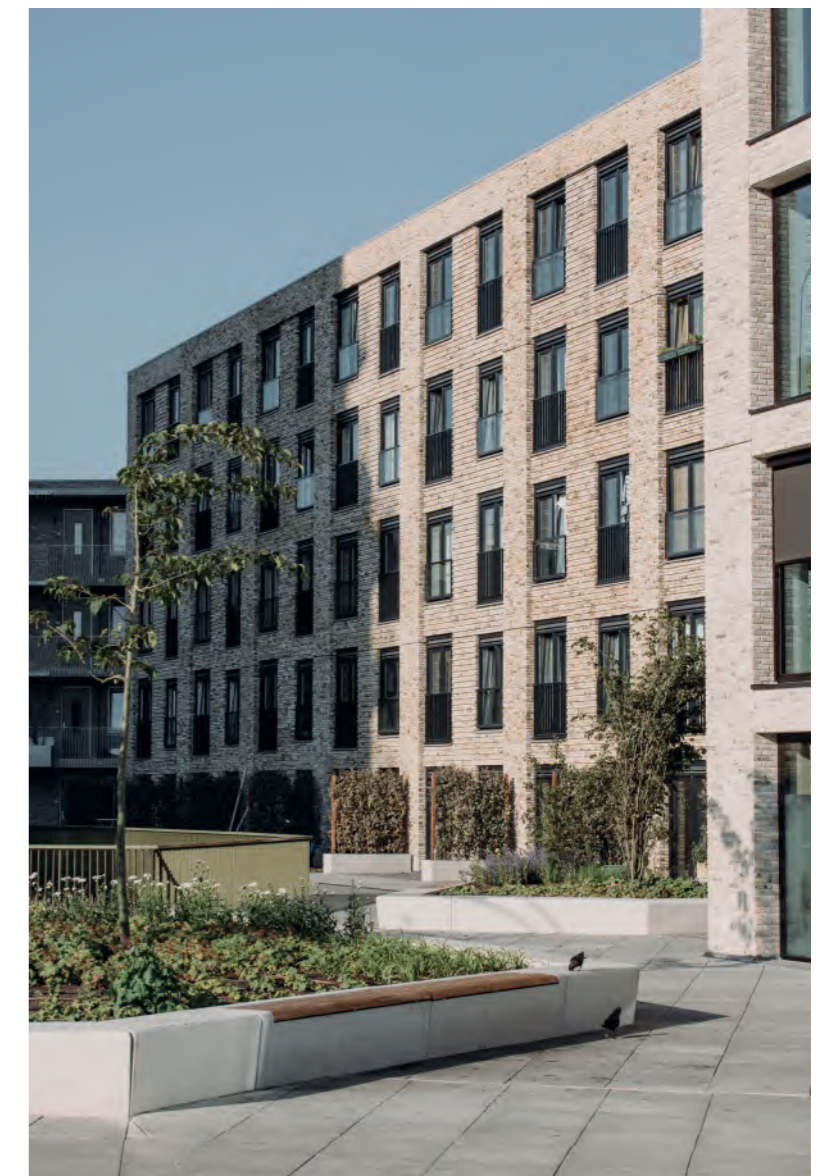
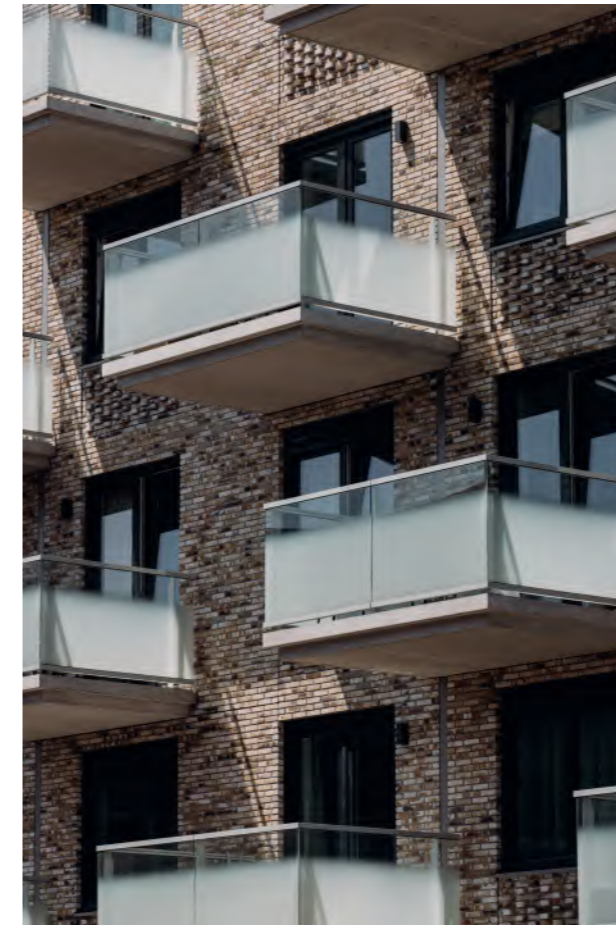
25

Freeze-thaw
resistance

F2

Consumption per m²

73 / 58



GABBRO wf p.150



GABBRO METALLIC wf / df p.154



GRAFIET wf / df p.156



IROKO wf / df p.157



AMARANTE wf p.158



SARDONYX wf p.160



TEAK wf p.161



CHIARA wf / df p.162



OXYDO wf / df p.163



FERRO wf p.166



FUME wf / df p.170



GRANITO wf p.155



QUARZITE wf / df p.171



ROOKKWARTS wf / df p.172



Tighel

- TIGHEL BRIK® — hand-formed engobed bricks with a perfectly smooth surface (additionally treated with water during the production process).

CERITE wf / df p.176



MOSAGAAT SMOOK wf p.185



OGENAGAAT wf / df p.180



KALAHARI wf / df p.184



THAR wf p.186



OPALINE SMOOK df p.187



ZAGORA wf / df p.188



POLAR wf / df p.189



●
Water absorption

12%

Mean compressive
strength

30

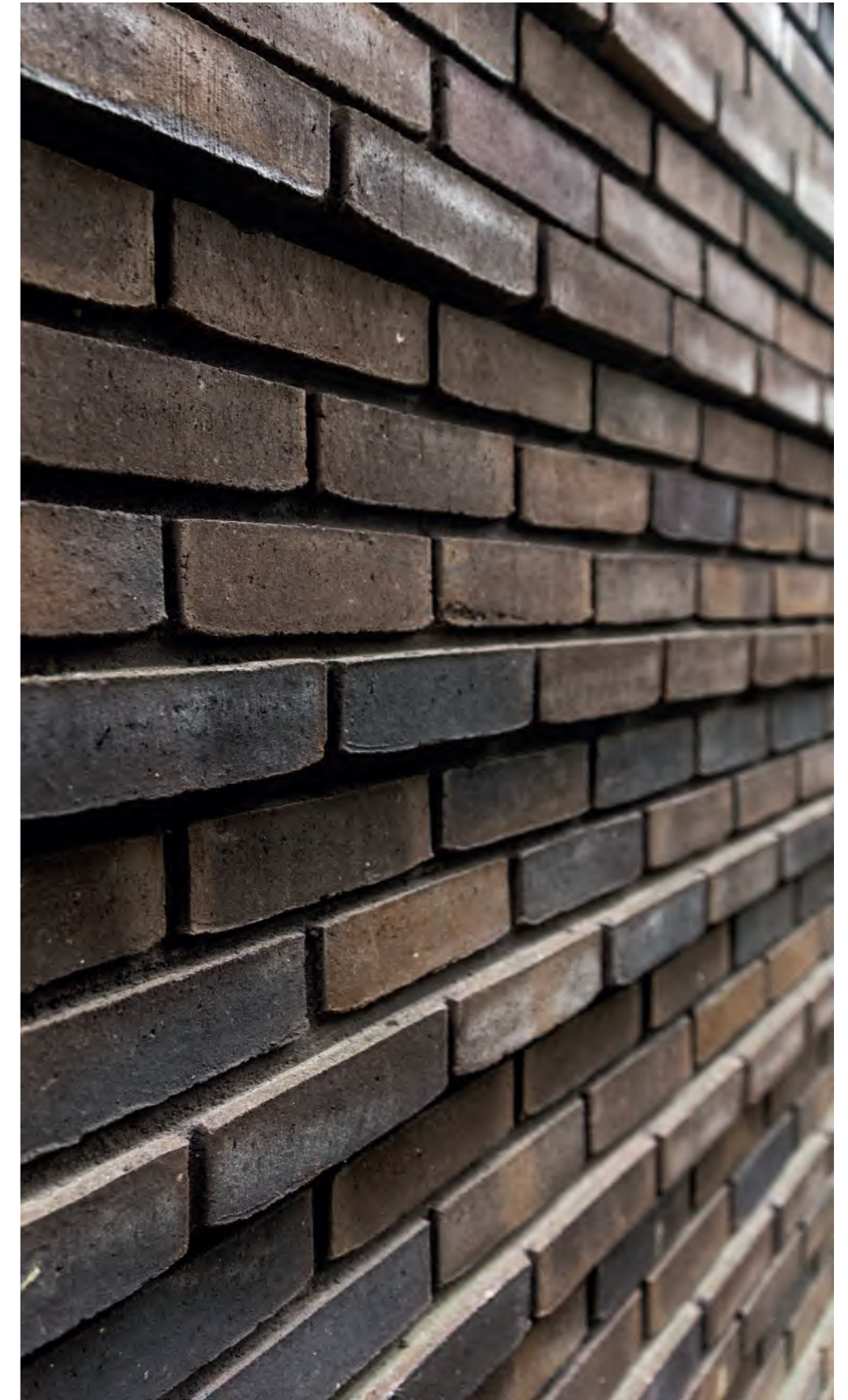
Freeze-thaw
resistance

F2

Consumption per m²

73 / 58





GABBRO
METALLIC
wf

25040741

ENGELS BAKSTEEN

ENGELS BAKSTEEN

25047801

GRANITO
wf

●
Water absorption

12%

Mean compressive
strength

30

Freeze-thaw
resistance

F2

Consumption per m²

73



●
Water absorption

12%

Mean compressive
strength

30

Freeze-thaw
resistance

F2

Consumption per m²

73



GABBRO
METALLIC
wf

25040741

ENGELS BAKSTEEN

ENGELS BAKSTEEN

25047801

GRANITO
wf

●
Water absorption

12%

Mean compressive
strength

30

Freeze-thaw
resistance

F2

Consumption per m²

73



●
Water absorption

12%

Mean compressive
strength

30

Freeze-thaw
resistance

F2

Consumption per m²

73



●
Water absorption

12%

Mean compressive
strength

30

Freeze-thaw
resistance

F2

Consumption per m²

73 / 58



●
Water absorption

12%

Mean compressive
strength

30

Freeze-thaw
resistance

F2

Consumption per m²

73 / 58



●
Water absorption

12%

Mean compressive
strength

30

Freeze-thaw
resistance

F2

Consumption per m²

73



SARDONYX
wf

25044901

ENGELS BAKSTEEN

ENGELS BAKSTEEN

25046801

TEAK
wf

●
Water absorption

12%

Mean compressive
strength

30

Freeze-thaw
resistance

F2

Consumption per m²

73



●
Water absorption

12%

Mean compressive
strength

30

Freeze-thaw
resistance

F2

Consumption per m²

73



●
Water absorption

14%

Mean compressive strength

15

Freeze-thaw resistance

F2

Consumption per m²

73 / 58



●
Water absorption

12%

Mean compressive strength

30

Freeze-thaw resistance

F2

Consumption per m²

73 / 58





●
Water absorption

12%

Mean compressive
strength

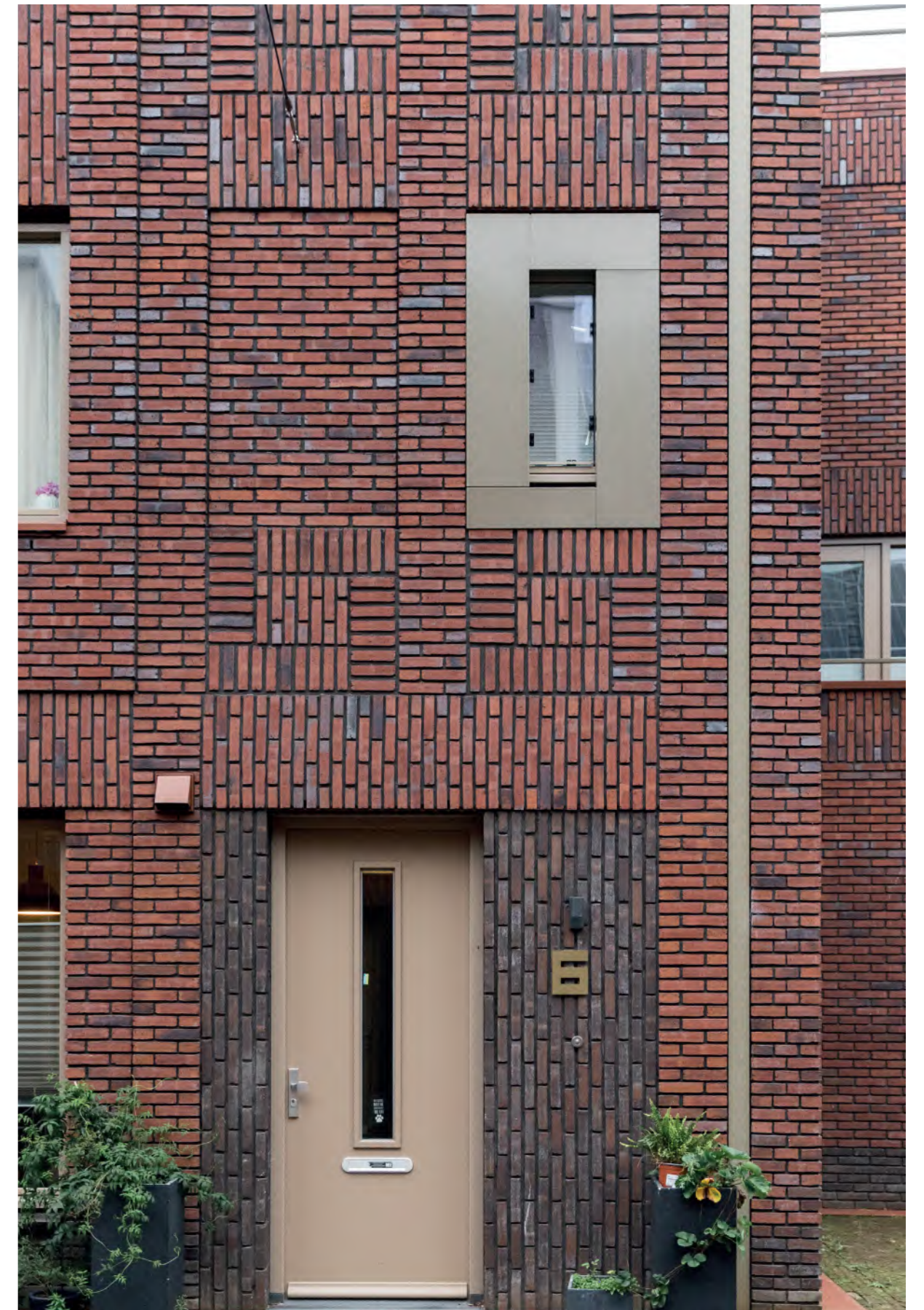
30

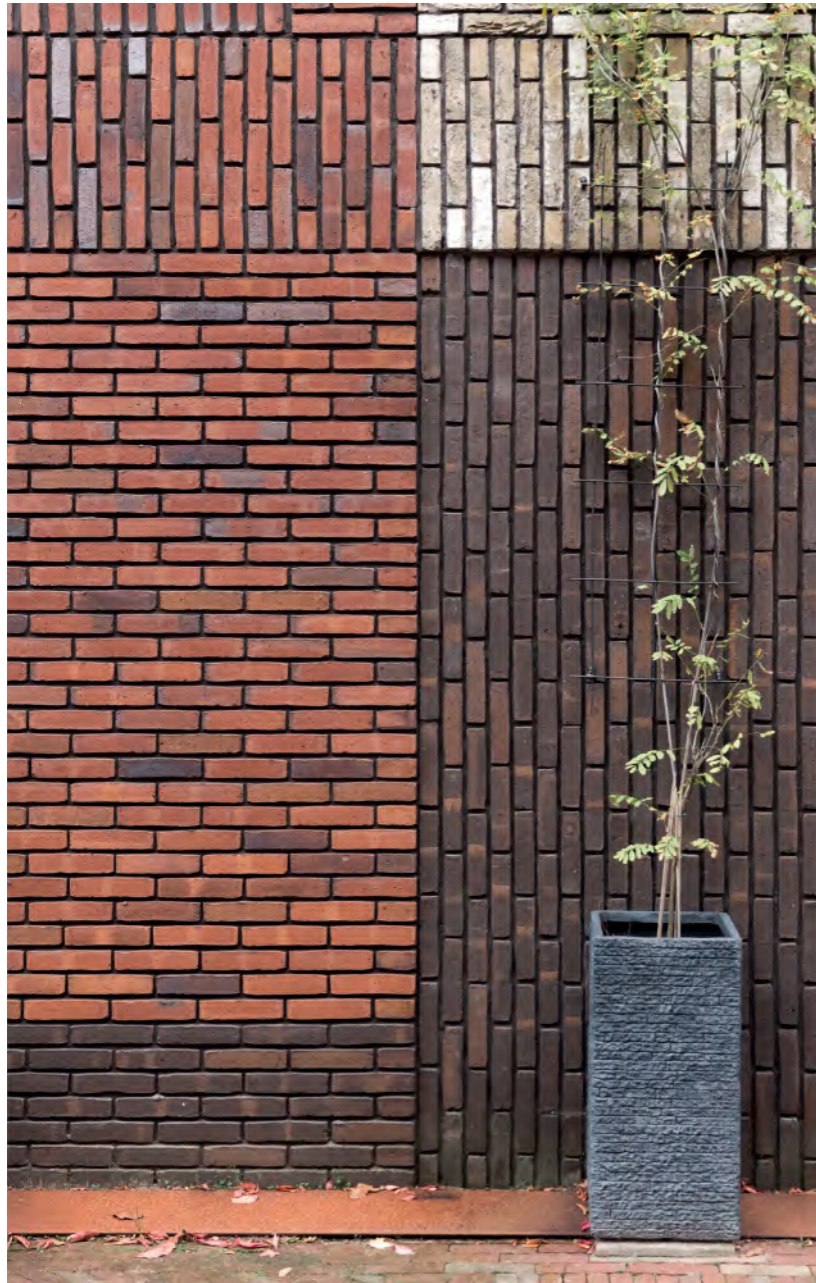
Freeze-thaw
resistance

F2

Consumption per m²

73





●
Water absorption

12%

Mean compressive
strength

30

Freeze-thaw
resistance

F2

Consumption per m²

73 / 58



●
Water absorption

14%

Mean compressive
strength

15

Freeze-thaw
resistance

F2

Consumption per m²

73 / 58



●
Water absorption

14%

Mean compressive
strength

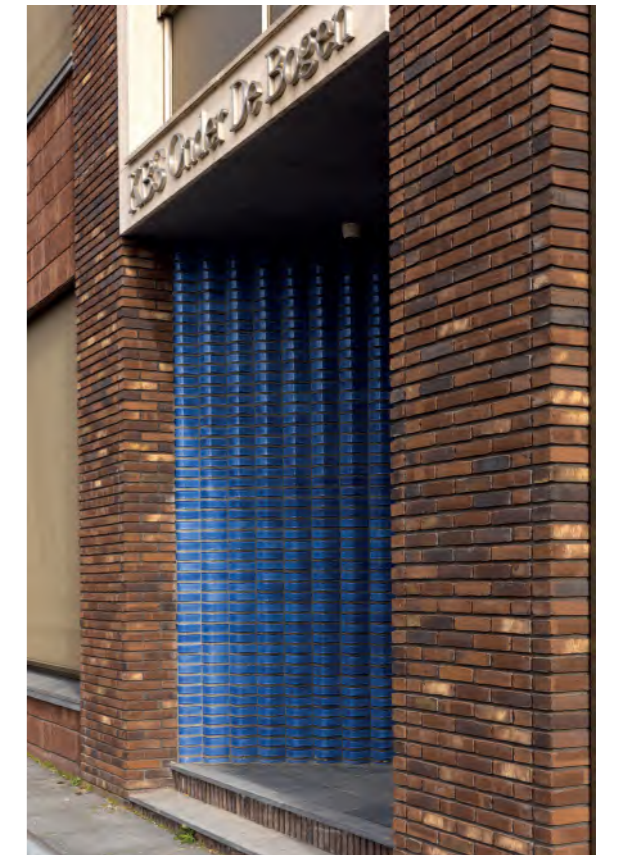
15

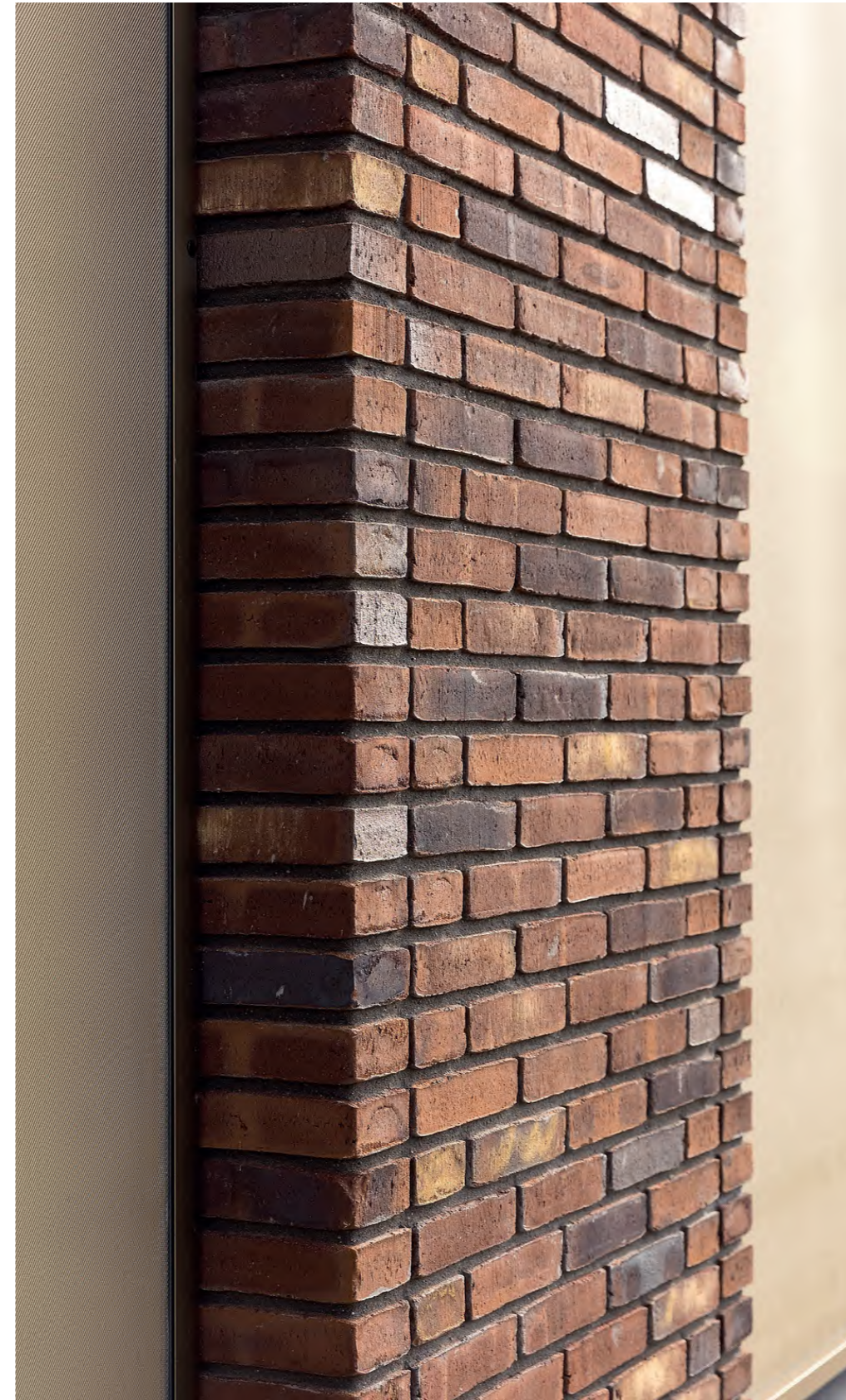
Freeze-thaw
resistance

F2

Consumption per m²

73 / 58





●
Water absorption

20%

Mean compressive
strength

15

Freeze-thaw
resistance

F2

Consumption per m²

73 / 58





●
Water absorption

20%

Mean compressive
strength

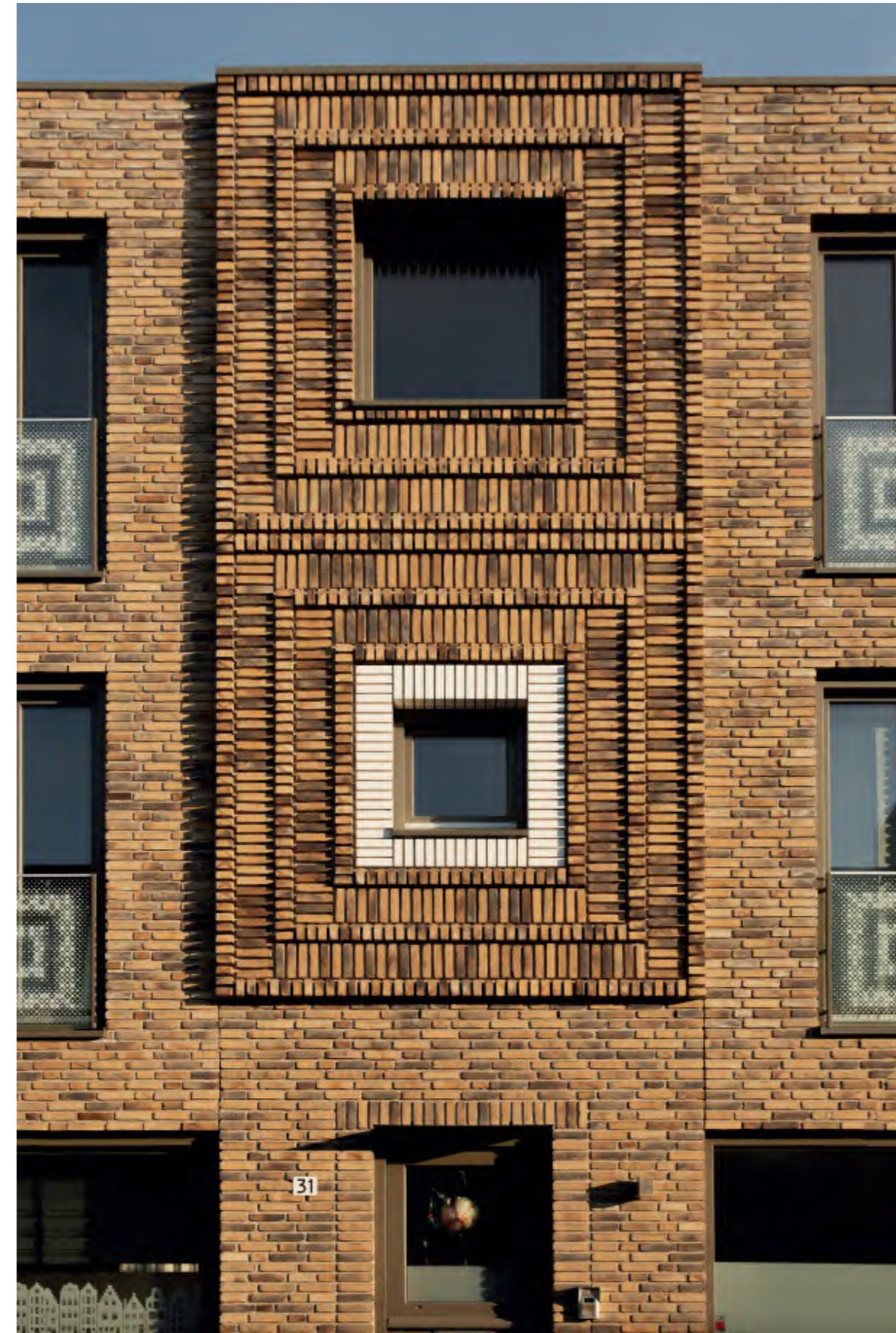
15

Freeze-thaw
resistance

F2

Consumption per m²

73 / 58





●
Water absorption

20%

Mean compressive
strength

15

Freeze-thaw
resistance

F2

Consumption per m²

73 / 58



●
Water absorption

20%

Mean compressive
strength

15

Freeze-thaw
resistance

F2

Consumption per m²

73



THAR
wf

25043501

ENGELS BAKSTEEN

ENGELS BAKSTEEN

25143201

OPALINE
SMOOK
df

●
Water absorption

10%

Mean compressive
strength

40

Freeze-thaw
resistance

F2

Consumption per m²

73



●
Water absorption

20%

Mean compressive
strength

15

Freeze-thaw
resistance

F2

Consumption per m²

58



●
Water absorption

20%

Mean compressive
strength

15

Freeze-thaw
resistance

F2

Consumption per m²

73 / 58



●
Water absorption

10%

Mean compressive
strength

40

Freeze-thaw
resistance

F2

Consumption per m²

73 / 58



WYATT wf / df p.192



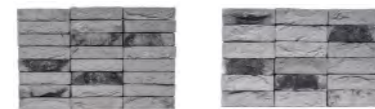
POPPY wf / df p.193



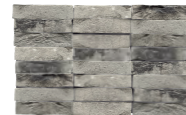
LUCY wf p.194



JOHN JAMES JUNIOR wf / df p.198



HAZEL wf p.199



SMOKED

● SMOKED – a brick that is fired twice to achieve shades of gray for creating stylish modern facades and interiors.

FRANKLIN p.200



EDEN wf / df p.204



COLUMBUS wf p.208



CHESTER wf p.209



AXELLE wf / df p.210



WYATT
wf / df

●
Water absorption

20%

Mean compressive
strength

15

Freeze-thaw
resistance

F2

Consumption per m²

73 / 58



JOSEPH BRICKS

JOSEPH BRICKS

POPPY
wf / df

●
Water absorption

8%

Mean compressive
strength

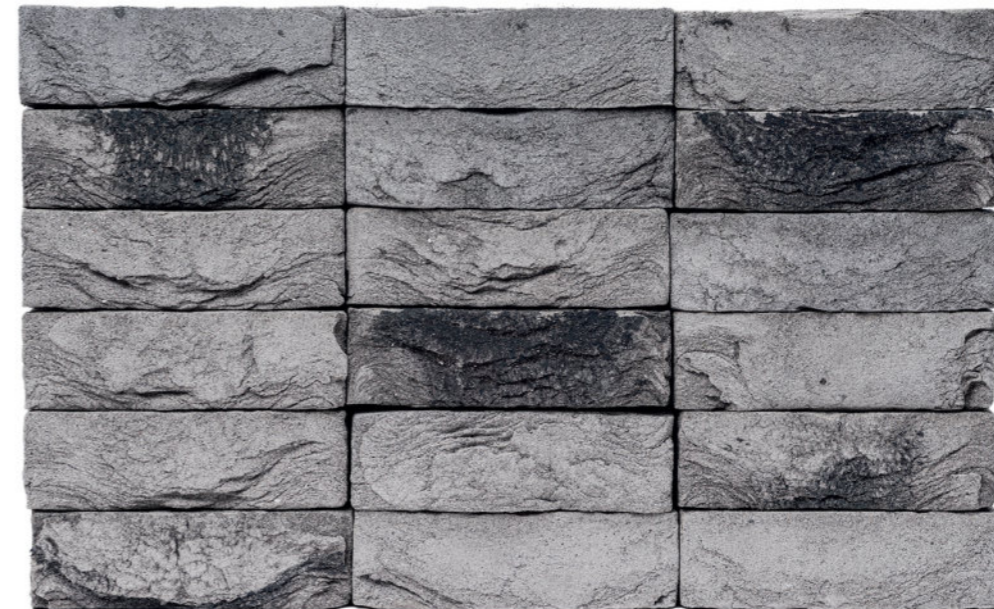
25

Freeze-thaw
resistance

F2

Consumption per m²

73 / 58



●
Water absorption

10%

Mean compressive
strength

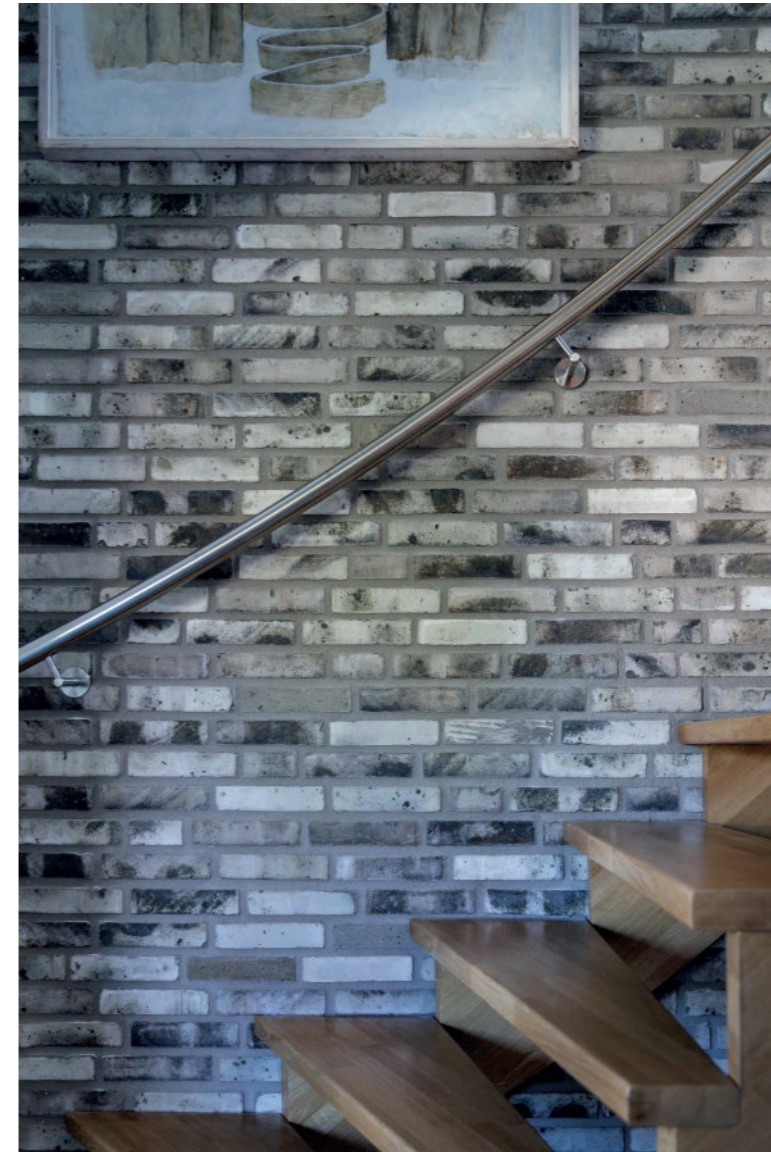
25

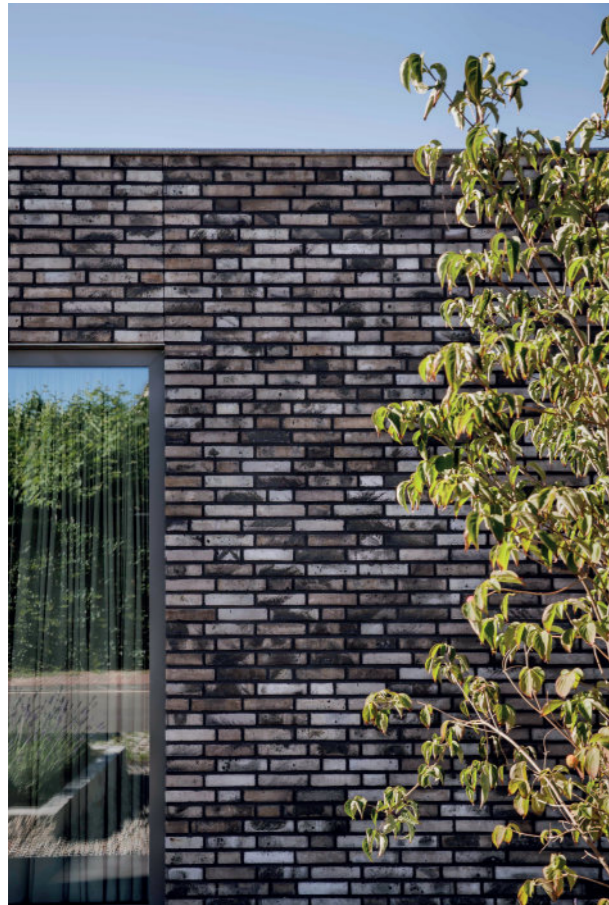
Freeze-thaw
resistance

F2

Consumption per m²

73





JOHN JAMES JUNIOR
wf / df

●
Water absorption

8%

Mean compressive
strength

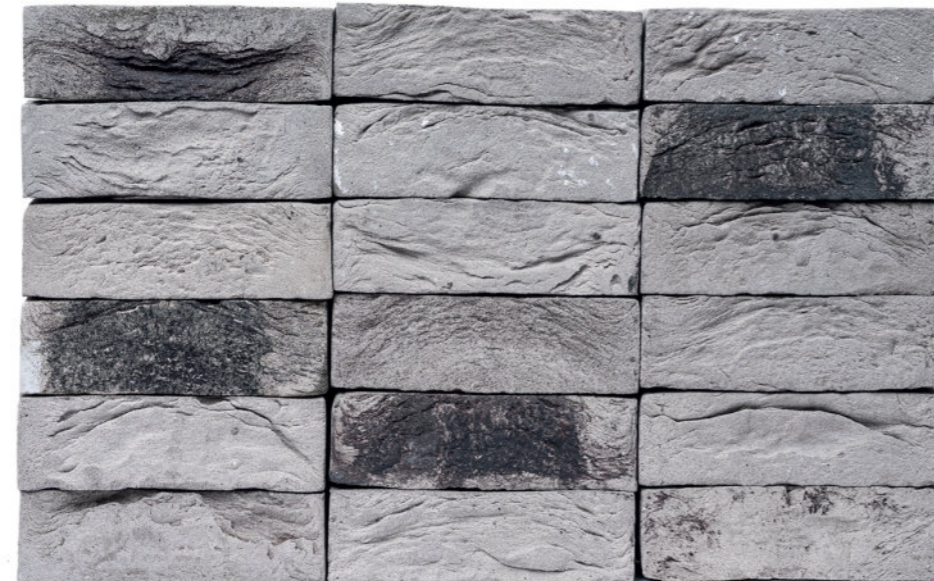
25

Freeze-thaw
resistance

F2

Consumption per m²

73 / 58



JOSEPH BRICKS

JOSEPH BRICKS

HAZEL
wf

●
Water absorption

8%

Mean compressive
strength

25

Freeze-thaw
resistance

F2

Consumption per m²

73



●
Water absorption

5%

Mean compressive strength

12,5

Freeze-thaw resistance

F2

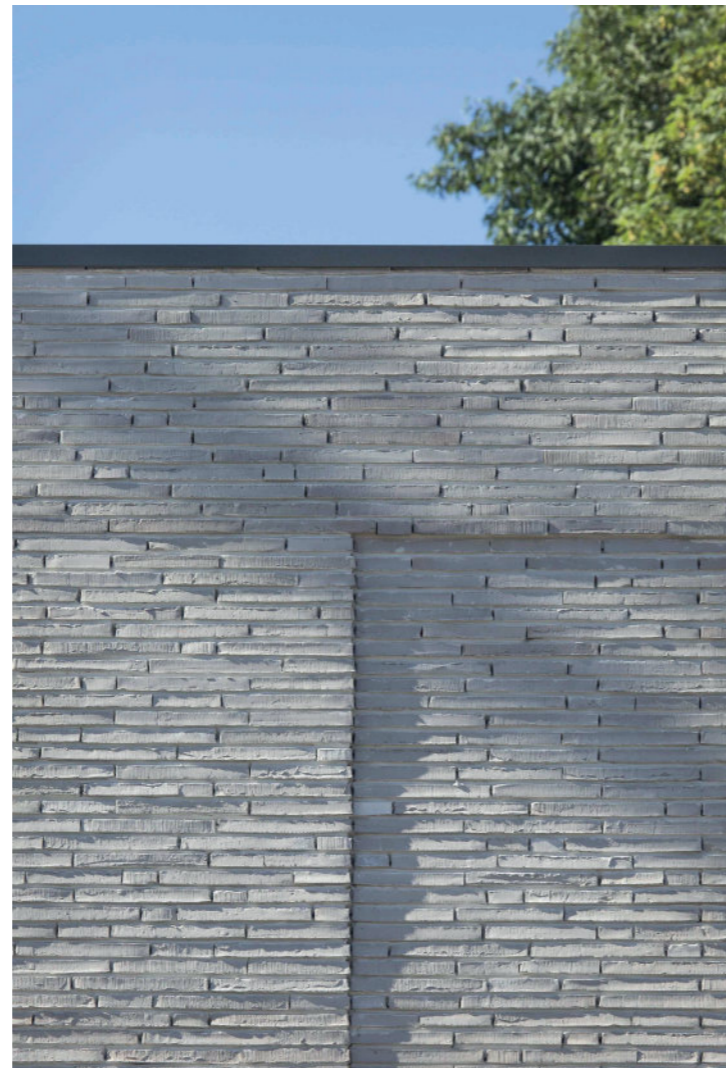
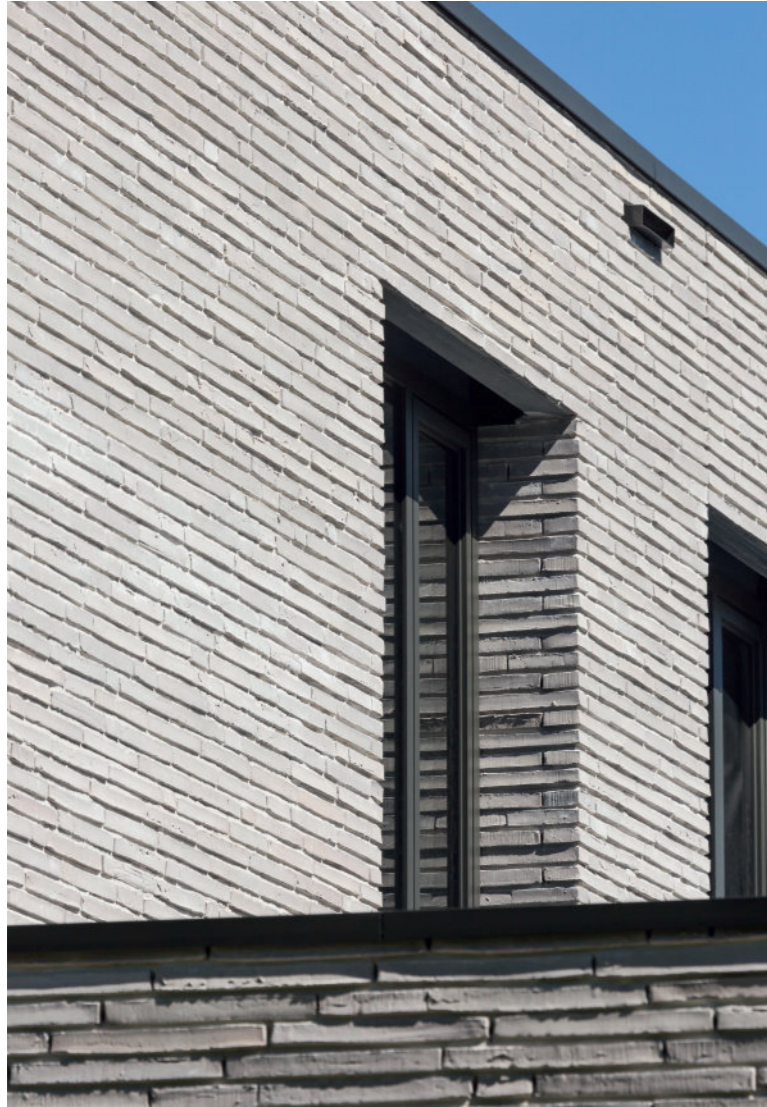
Consumption per m²

63

Size

337x87x36 MM





●
Water absorption

10%

Mean compressive
strength

25

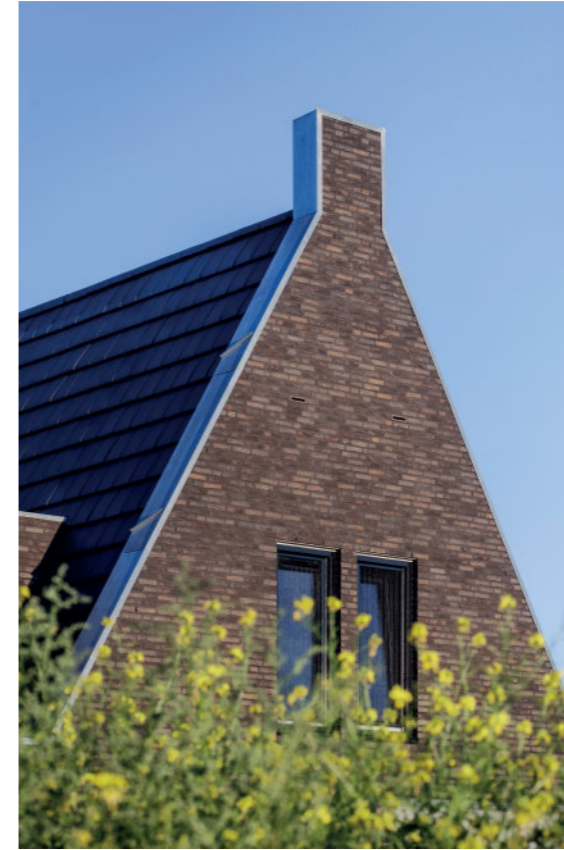
Freeze-thaw
resistance

F2

Consumption per m²

73 / 58





COLUMBUS
wf

●
Water absorption

12%

Mean compressive
strength

30

Freeze-thaw
resistance

F2

Consumption per m²

73



JOSEPH BRICKS

JOSEPH BRICKS

CHESTER
wf

●
Water absorption

10%

Mean compressive
strength

17,5

Freeze-thaw
resistance

F2

Consumption per m²

73



●
Water absorption

10%

Mean compressive
strength

17,5

Freeze-thaw
resistance

F2

Consumption per m²

73 / 58



